



Denture Workflow

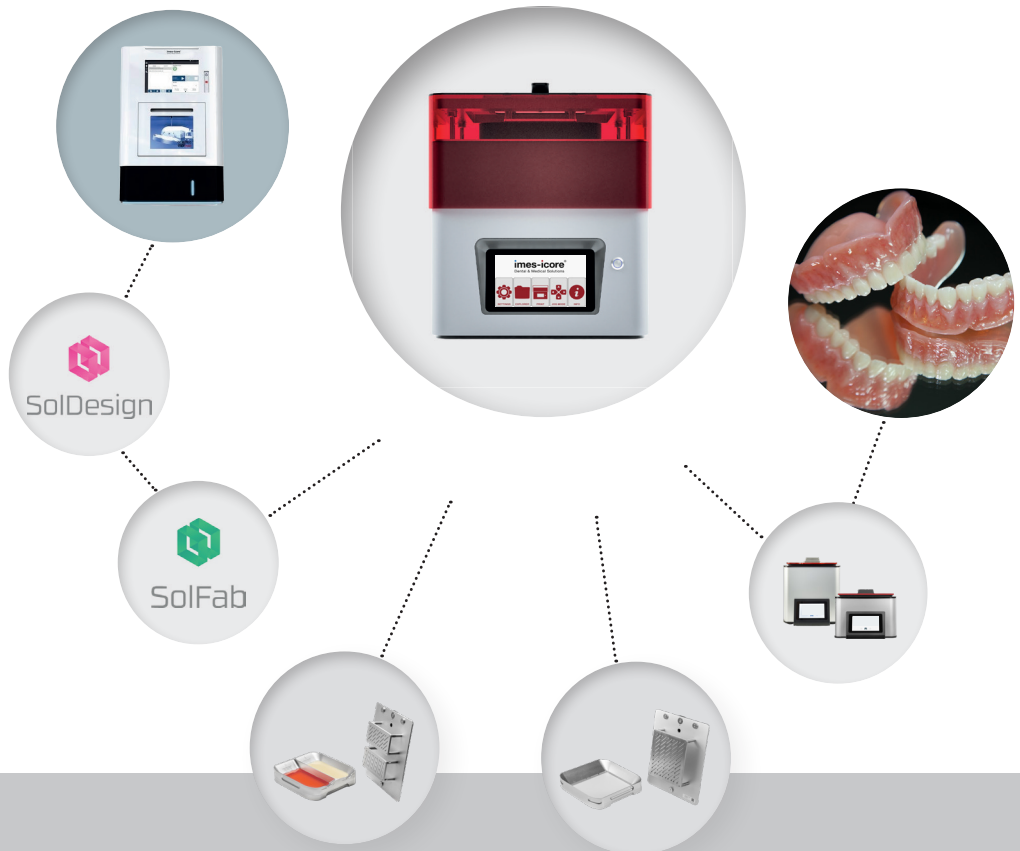


Table of Content

- 1** SolDesign - CAD Software
- 2** SolFab - Slicing Software
- 3** CORiTEC AM30 Dual
- 5** CORiTEC AM30
- 7** AM SolWash 2
- 8** AM SolCure 2

SolDesign - CAD Software

Dental

- > Intuitive design of dentures
- > CAD software for 3D printing or milling
- > Automatic file transfer to SolFab for 3D printing

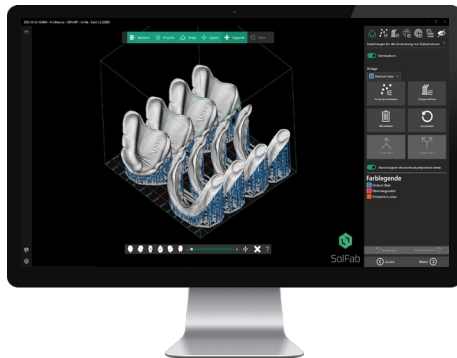


SolDesign

- > Automatic file transfer to integrated 3rd party CAM for milling
- > Export of open 3D data for use in 3rd party CAM systems

SolFab - Slicing Software

- > CAM software
- > Automated recognition of applications
- > Intuitive interface



- > The SolFab algorithm automatically recognizes dental indications such as splints, templates, dentures, models and more based on the data input
- > Automatic generation of print-ready support structures

CORiTEC AM30 **Dual**

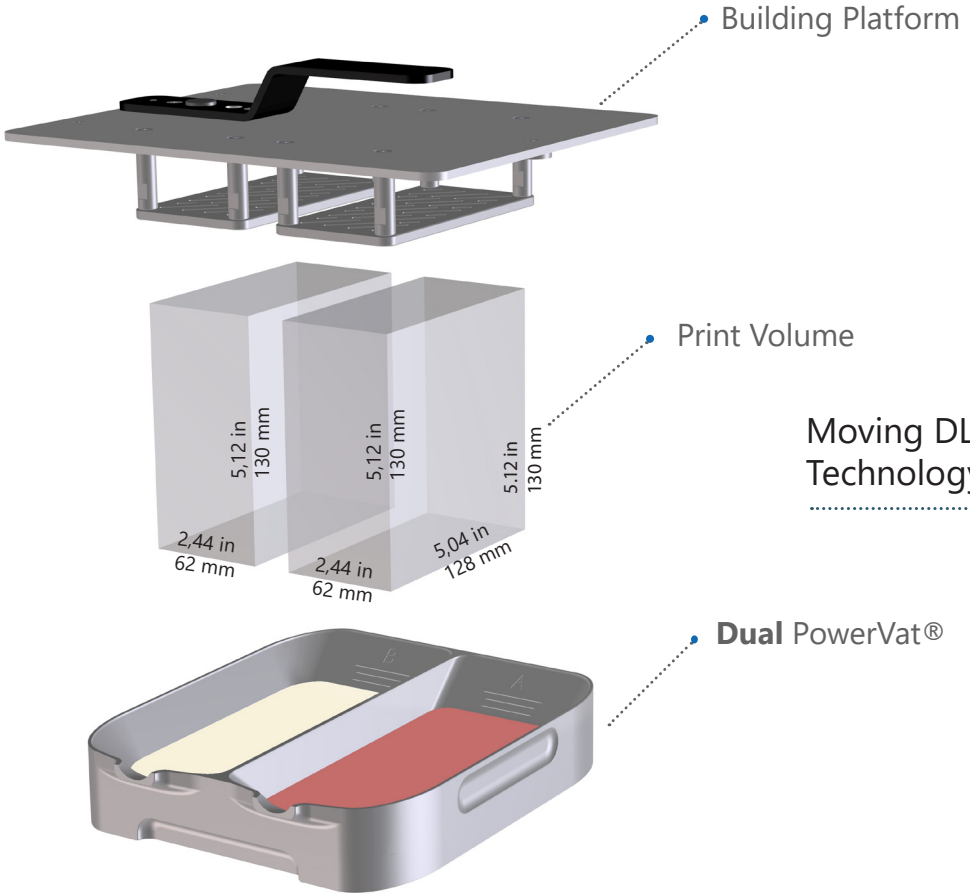


- > Professional 3D printer
- > Remote diagnostics & support functions
- > Dual PowerVat® print with two different resins
- > Moving DLP®
- > Open material system

Dimensions	15.74 x 15.74 x 22.44 in 400 x 400 x 570 mm	Weight	~ 44 lbs ~ 20 Kg
Print Volume (2x)	2.44 x 5.04 x 5.12 in* 62 x 128 x 130 mm*	Operating Temperature	64 - 82 °F 18 - 28 °C
Layer Thickness	0.001 - 0.008 in 25 - 200 µm	Power Requirements	100 - 240 V 50/60Hz, 102 W
Pixel Size	0.002 in* 50 µm*	Technology	UV-LED DLP®, Wavelength: 385 nm, Moving DLP

* Pixel size and print volume may vary

CORiTEC AM30 Dual



Moving DLP®
Technology

CORiTEC AM30

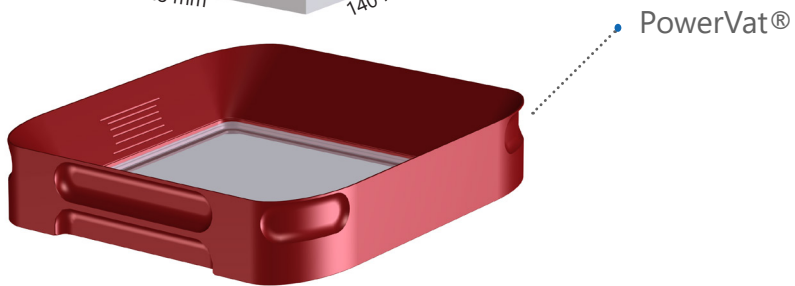
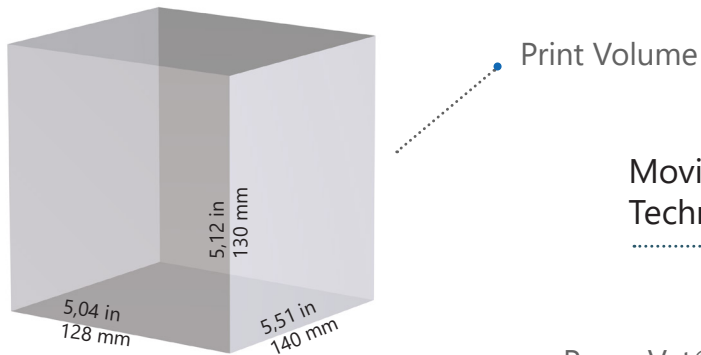
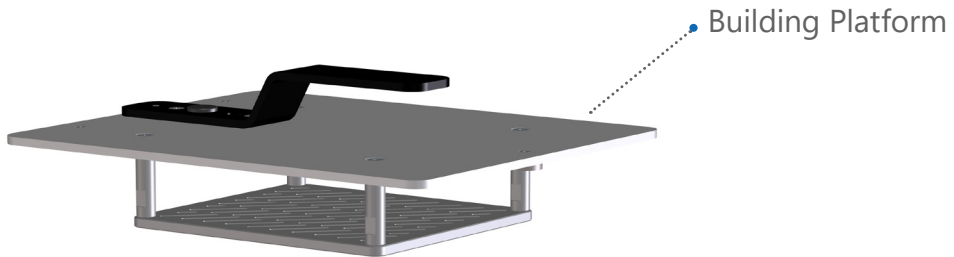


- > Professional 3D printer
- > Remote diagnostics & support functions
- > PowerVat®
- > Moving DLP®
- > Open material system

Dimensions	15.74 x 15.74 x 22.44 in 400 x 400 x 570 mm	Weight	~ 44 lbs ~ 20 Kg
Print Volume	5.04 x 5.51 x 5.12 in* 128 x 140 x 130 mm*	Operating Temperature	64 - 82 °F 18 - 28 °C
Layer Thickness	0.001 - 0.008 in 25 - 200 µm	Power Requirements	100 - 240 V 50/60Hz, 102 W
Pixel Size	0.002 in* 50 µm*	Technology	UV-LED DLP®, Wavelength: 385 nm, Moving DLP

* Pixel size and print volume may vary

CORiTEC AM30



AM SolWash 2

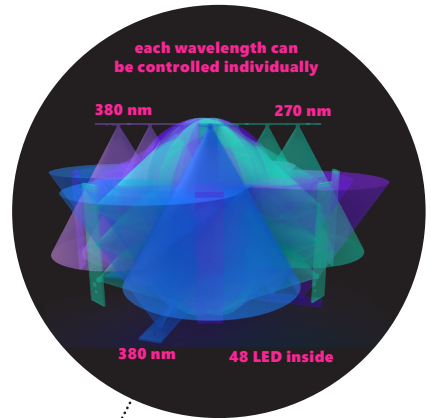
- > High precision for medical device fabrication
- > Minimal microcracks, enhancing object quality
- > Flexible programs, matching materials and agents
- > Easily replaceable containers,
- > Rapid cleaning liquid changes



Cleaning Treatment Area	Components	Device Dimensions
210 x 195 x 95 mm	Automatic basket movement, liquid saturation level sensor, liquid level sensor and touch panel	455 x 365 x 425 mm

AM SolCure 2

- > Post-curing with 48 LEDs
- > 3 wavelengths (380nm, 400nm, and 470nm) and option to use inert gas
- > No preheating required
- > Intuitive touchscreen and cloud connectivity for easy material selection and treatment initiation
- > Personalized programs



Curing Treatment Area	LED Technology	Device Dimensions
250 x 250 x 165 mm	3 x 16 LEDS (380 nm - 400 nm - 470 nm) 48 LEDS	455 x 365 x 295 mm



imes-icore GmbH
Im Leibolzgraben 16
36132 Eiterfeld, Germany

Tel.: +49 (0) 66 72/898 228
Mail: dental@imes-icore.de
Web: www.imes-icore.com