

CORiTEC® 250i PRO+ Series



# The Best Price- Performance Ratio

Unlimited Efficiency for Daily Lab Work



**iCAMHD**  
by hyperDENT  
included

**imes-icore®**  
Dental & Medical Solutions



5 AX  
5-axis  
Machining

A/B  
Auto-  
calibration

ION  
2-fold  
Ionizer

Automated  
Cleaning

Zero Point  
Clamping System\*

iCAM  
Integrated  
iCAM HD  
included

# Full Performance in the Lab

## AT A TOP PRICE

The CORiTEC 250i PRO+ is a new machine series that impresses with its ideal balance of performance, versatility and space requirements. The optimally matched axis drives operate with low vibration and thus ensure impressive production results. The solid basic construction of a mono-block cast body ensures smooth running.

Perfect for laboratories that want to produce complex indications efficiently and precisely. The CORiTEC 250i PRO+ series is very well suited for processing metal blanks. Other common dental materials can also be professionally processed wet and dry.




The CORiTEC 250i PRO+ series, available as 250i PRO+ and 250i Loader PRO+, offers flexible solutions that are tailored to the needs of modern dental laboratories.



CORiTEC  
250i PRO+



CORiTEC  
250i Loader PRO+

Technical data		
Fully automatic workpiece changer	Manual	 6-fold
Blank holder	1	4
Materials		
Ceramics and hybrid materials	✓	✓
Metals and alloys	✓	✓
Polymers and plastics	✓	✓
Indications		
All common indications		



# Top Features

ALL ADVANTAGES AT A GLANCE



## PARTICULARLY QUIET RUNNING THANKS TO 1KW HIGH-FREQUENCY SPINDLE

The air-cooled spindle ensures a long service life for the milling tools and at the same time offers outstanding performance for efficient work.

- ✓ Powerful 1.0 kW spindle with 60.000 rpm
- ✓ Tools with 6 mm shaft diameter
- ✓ Maximum durability



## BLANK / ADAPTER CHANGE WITHOUT LOSS OF POSITION

The zero-point clamping system module enables the blank and adapter to be changed quickly and precisely with just one click. This system significantly increases efficiency and precision while optimizing changeover processes, especially when machining on different material holders.

- ✓ Precise changing without loss of position
- ✓ Compatible with a wide range of adapters
- ✓ Maximum flexibility for different applications



## TOOL MAGAZINE CHANGE IN SECONDS

The tool magazine holds 10 tools and can be completely exchanged with a single movement, e.g. for other material groups.

- ✓ 10-fold tool changer
- ✓ Quick exchange of the complete magazine
- ✓ Simple loading



## SMART AND INTUITIVE OPERATION

The machines in the CORITEC 250i Pro+ series are easy to operate thanks to the smart touch screen and intuitive user interface. After a short briefing, the system can be operated without time-consuming training. Intelligent assistants for e.g. cleaning and autocalibration supports the user in daily operation.

Thanks to the connection to the DentalSmartMarket (DSM) and regular automatic updates, you are always up to date.



## 24/7 Automation for Your Laboratory

CORiTEC® 250i LOADER PRO+  
WITH 6-FOLD BLANK CHANGER  
VIA INDUSTRIAL ZERO-POINT  
CLAMPING SYSTEM



The model is optionally available with a practical loader option, which enables up to 6 blanks to be changed automatically. This ensures unattended 24/7 production, reduces downtime and increases profitability through continuous, efficient operation – perfect for laboratories striving for maximum productivity.





## Maximum Performance: Wet & Dry

### FOR EVERY MATERIAL REQUIREMENT

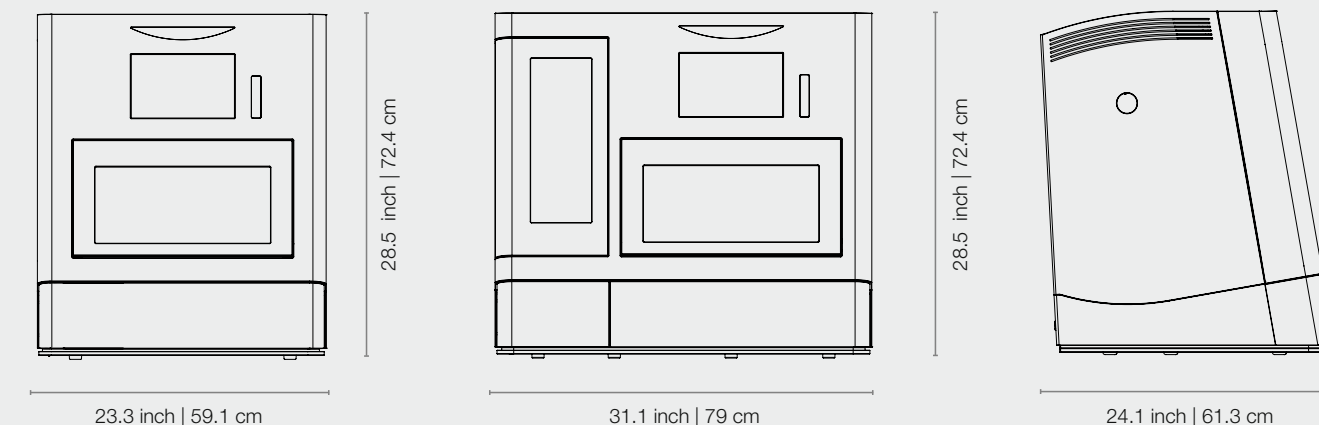
✓ Wet machining with integrated filter / cooling lubrication system ensures precise results with outstanding surface quality – ideal for glass ceramics, composites and titanium.

✓ With dry processing, you can achieve fast and precise results, e.g. with zirconium, PMMA and everyday CoCr indications. The system shows its strengths through its enormous flexibility in the range of applications, with high-quality surfaces and high accuracy.

## Perfect Dimensions

### SOPHISTICATED, EFFICIENT DESIGN FOR MAXIMUM STABILITY

The CORITEC 250i PRO+ series impresses with its compact design and intelligent construction, which minimizes space requirements while enabling maximum efficiency. With state-of-the-art technology and robust construction, it guarantees optimum performance and precise results, even in demanding applications. An ideal solution for laboratories that value stability and flexible application options.



# Freedom in Materials & Applications

FROM CERAMICS TO METALS –  
PRECISE SOLUTIONS FOR EVERY APPLICATION



PMMA	WAX
Zr	COMPOSITE
PEEK	SINT
Glass ceramics	PreMilled Abutments
CoCr	Ti

Standard	PreMilled Abutment	Full Dentures
C-Clamp	Block	Zero Point Clamping System

Crown, Bridge	Inlay, Onlay, Veneer	Hybrid Abutment	Splint
Full Denture	Model	Drilling Template	Model Casting
Bar	Telescope Technology	Abutment	Hybrid Processing

FEATURES  
APPLICATIONS  
CONTROL SOFTWARE  
CAM SOFTWARE  
ACCESSORIES



# Maximum Flexibility

## HOLDER AND ADAPTER

Our zero point clamping system ensures that the holders can be changed quickly and that the blanks are always precisely positioned and kept stable - for precise and reliable results with every milling process.

The changing system works quickly and safely: it is opened with air pressure and automatically locked by a spring. A special pin and a conical guide also ensure that each workpiece is seated with micrometer precision. This means that the workpiece remains firm and stable at all times! This system makes milling easier, faster and better – and takes you one step further with every project!

### 1 6-FOLD ADAPTER

With the 6-fold adapter, up to six blocks or abutments can be processed simultaneously. Flexible, interchangeable strips facilitate adaptation to different adapter systems and enable quick material changes for maximum efficiency.

### 2 BLANK HOLDER

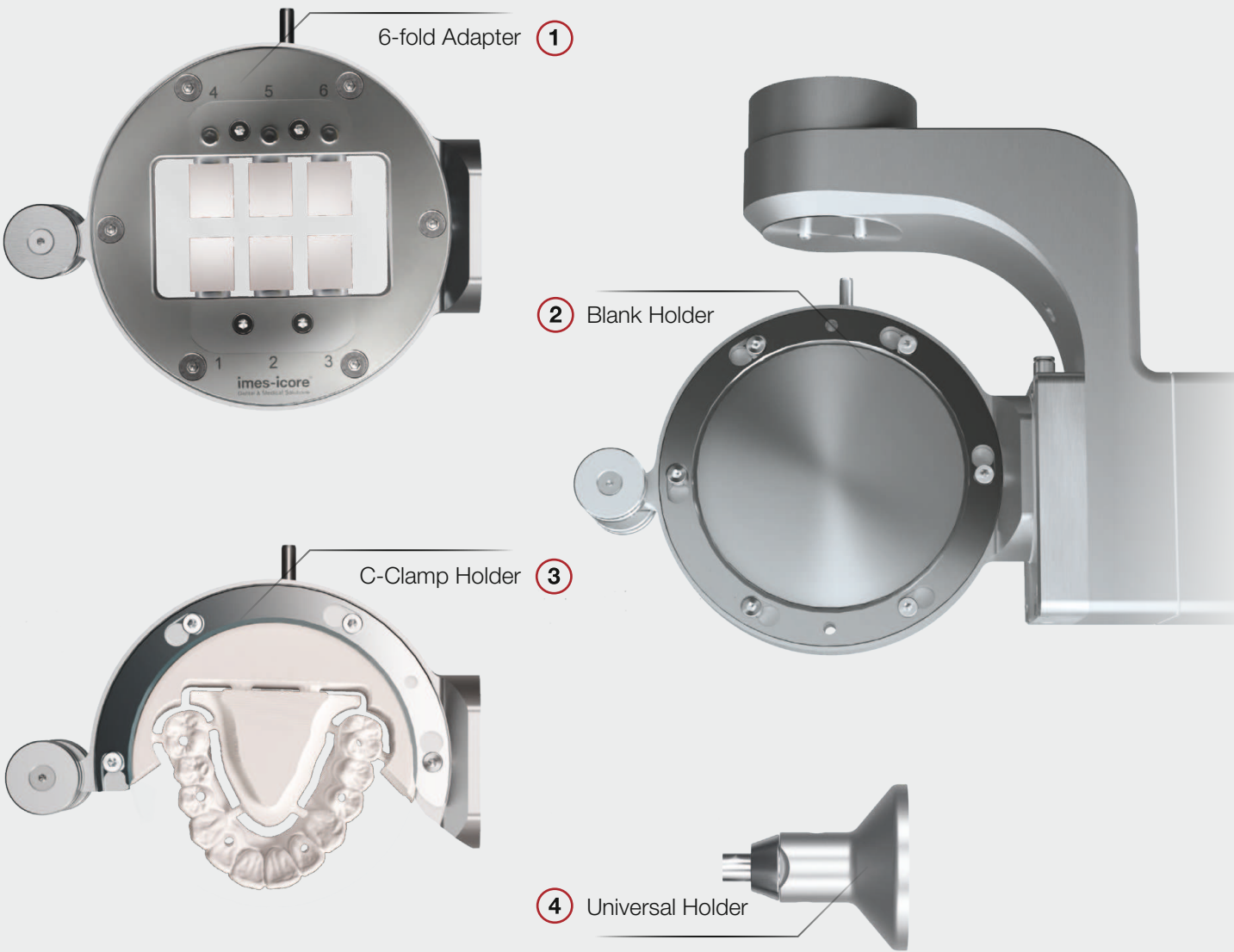
The closed stainless steel blank holder offers high stability and is ideal for the precise processing of all common materials in blank form.

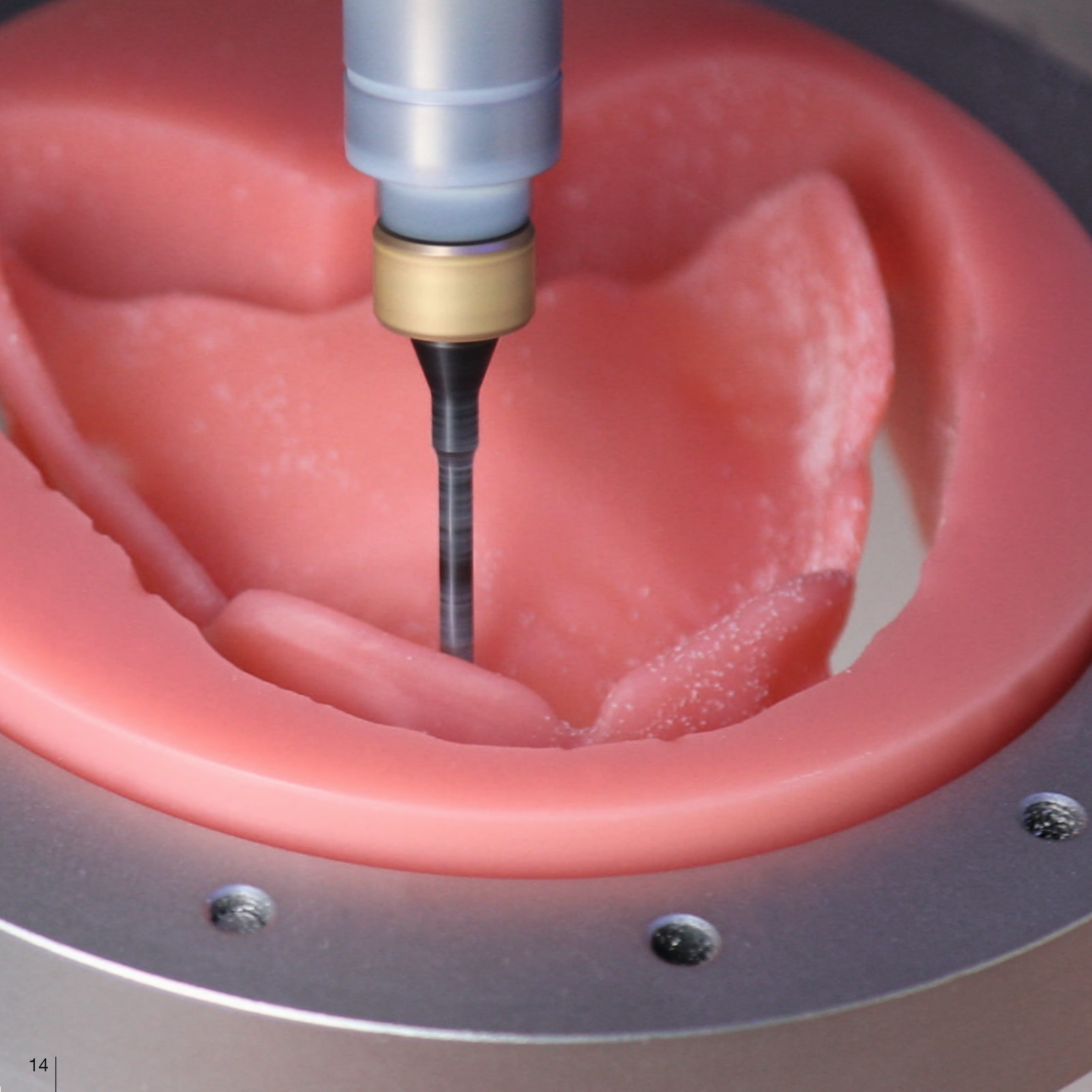
### 3 C-CLAMP HOLDER

The half-open blank holder enables 5-axis machining up to 90° and opens up new possibilities for complex geometries and precise post-processing. Its design guarantees exact positioning for the best results.

### 4 UNIVERSAL HOLDER

The universal adapter is a versatile single holder for turning, milling and grinding operations. It offers high accuracy of fit and enables tool-friendly processing. With a wide selection of adapters, it is ideal for glass ceramic blocks and various abutment systems.





# Versatile Possibilities

## INDICATIONS AND APPLICATIONS



### METAL PROCESSING

The machine guarantees high stability when processing crowns, bridges and bar requirements in CoCr and titanium. As a result, virtually all indications can be produced in the laboratory with good quality and accuracy of fit. The perfect price/performance ratio of the CORiTEC 250i PRO+ series provides the user with a perfect solution for demanding dental indications.

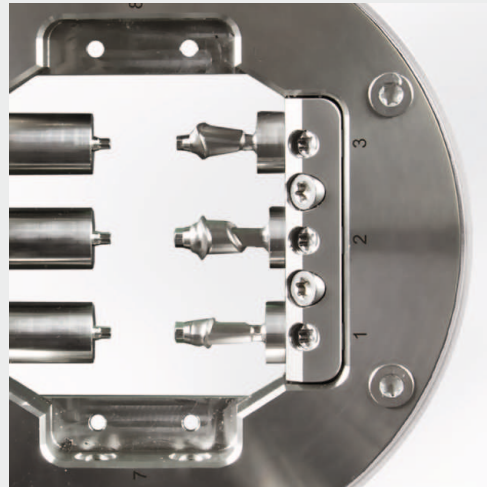
- ✓ High strength & stability
- ✓ Processing of CoCr and titanium blanks
- ✓ Perfect surface quality and precision



### MILLING OF FULL DENTURES

The milling process for full dentures combines time and cost cost efficiency with maximum precision. It guarantees exact results through perfect accuracy of fit and offers flexible design options for base and occlusal surfaces – ideal for Individual and highly esthetic prostheses.





## CORiTEC® preMill ABUTMENTS

The CORiTEC preMills are supplied with abutment screw and compatible libraries, modules and holders. They enable dental technicians and dentists to produce validated and efficient customized one-piece titanium abutments – with full control over quality and time, in compliance with FDA requirements.

- ✓ Short production times
- ✓ Validated overall system
- ✓ High accuracy of fit thanks to prefabricated implant interface



## GRINDING OF CAD/CAM BLOCKS

The 6-fold and 3-fold adapter ensures the precise fabrication of various tooth restoration solutions. The flexibility of the various adapters enables efficient processing.

- ✓ Crowns and bridge frameworks
- ✓ Onlays, inlays and veneers



## THERAPEUTIC SPLINTS

CORiTEC machines enable the precise manufacture of therapeutic splints. They guarantee a precise fit and comfort thanks to flexible production options and meet the highest demands in laboratories and practices.

- ✓ Bite splints, bleaching splints
- ✓ Mandibular advancement splints and aligners



## CROWNS, BRIDGES AND MORE

From single crowns and bridges to implant work: With a wide range of materials, we guarantee the highest quality with short production times.

- ✓ Ceramics and hybrid materials
- ✓ Metals and alloys
- ✓ Polymers and plastics

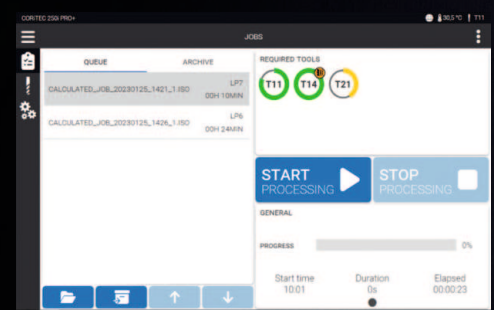
# Easy-To-Use

## INTUITIVELY OPERABLE USER SOFTWARE

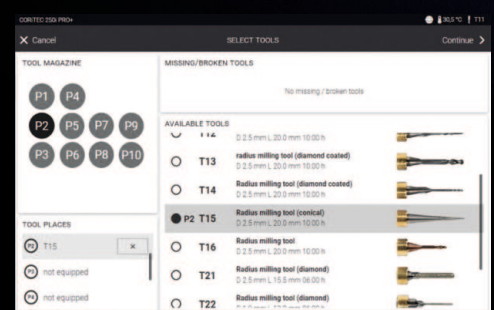
The SmartControl software enables intuitive operation of our milling machines – from job selection to monitoring the machine status. With a self-explanatory user interface in several languages, getting started is particularly easy. Just two clicks are all it takes to start a milling process. Benefit from software-supported efficiency that saves time and optimizes your workflow.

### CORiTEC® SmartControl

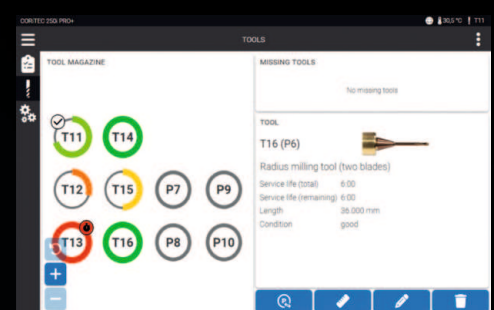
- ✓ Modern, intuitive design with touch operation and image-based instructions
- ✓ Intelligent selection of milling jobs
- ✓ Simple tool and material loading
- ✓ Auto-calibration of the machine
- ✓ Assistant-guided cleaning and maintenance
- ✓ Connection to the Dental Smart Market (DSM) platform
- ✓ Multilingual user interface
- ✓ Automatic updates for maximum safety
- ✓ Remote monitoring via integrated online camera
- ✓ Support via remote control



Automated transfer of information from the CAM software



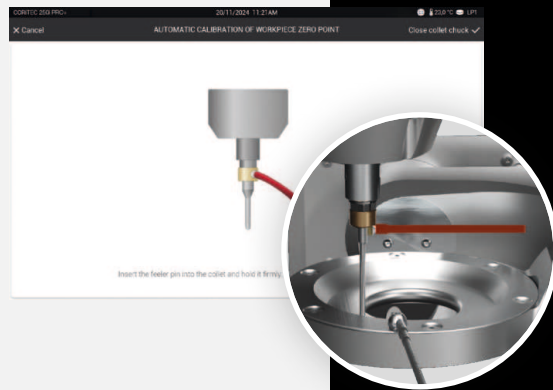
Optimum management of tools



Optimized for touchscreen operation

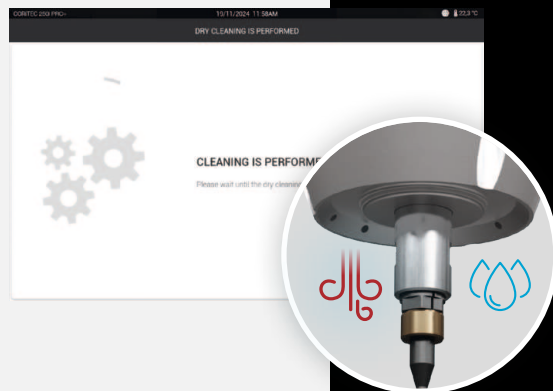






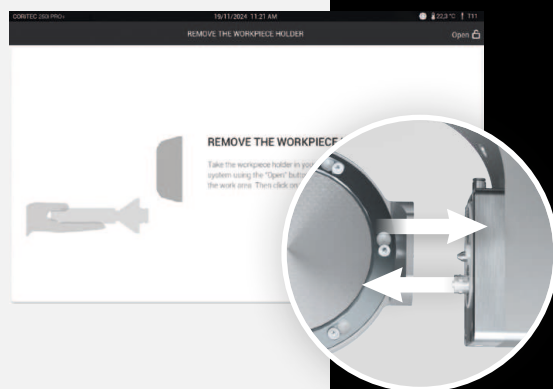
## AUTOCALIBRATION

Autocalibration enables quick and convenient handling to ensure consistently precise results. With intuitive step-by-step instructions and direct integration into the machine control system, the calibration process is simple and efficient. This saves you time and resources, while you can count on reliable and consistent precision.



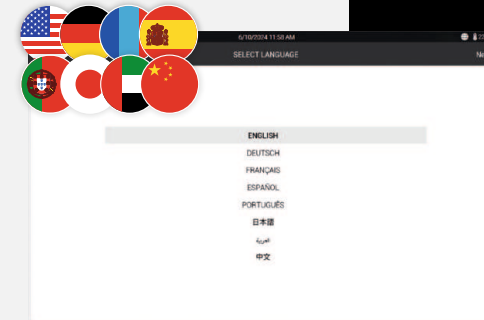
## ASSISTANT-GUIDED CLEANING

The assistant-guided cleaning process makes wet and dry cleaning your machine simple and efficient. The integrated step-by-step instructions ensure that the cleaning process is completed quickly and reliably – without time-consuming preparation or complex instructions. This function not only helps to extend the service life of the machine, but also ensures consistently high performance.



## SIMPLE HOLDER CHANGE

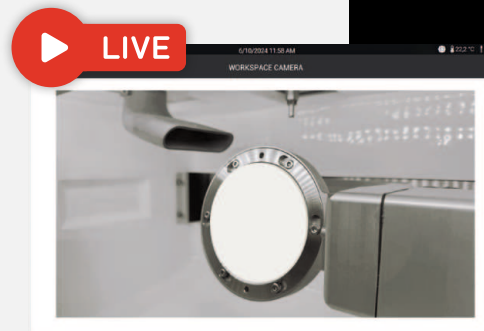
With the zero point clamping system, changing the holder is precise and uncomplicated. The control software guides users through the process with intuitive step-by-step instructions. As a result, the holder is positioned quickly and accurately, ensuring smooth operation and consistently precise results. At the same time, the workflow is optimized and the time required is significantly reduced.



## INDIVIDUAL LANGUAGE SELECTION

The flexible language options of the program interface support the operation in the preferred language. This versatility ensures intuitive use and maximum efficiency in day-to-day work worldwide.

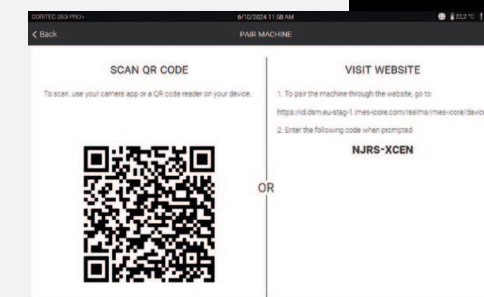
- ✓ German
- ✓ English
- ✓ Chinese
- ✓ Spanish
- ✓ French
- ✓ Portuguese
- ✓ Japanese
- ✓ Arabic



## MILLING PROCESS MONITORING

The integrated HD camera enables direct monitoring of the milling process in real time. If questions or challenges arise, the support team can respond quickly to ensure efficient support.

**CORITEC DSM**  
Dental Smart Market

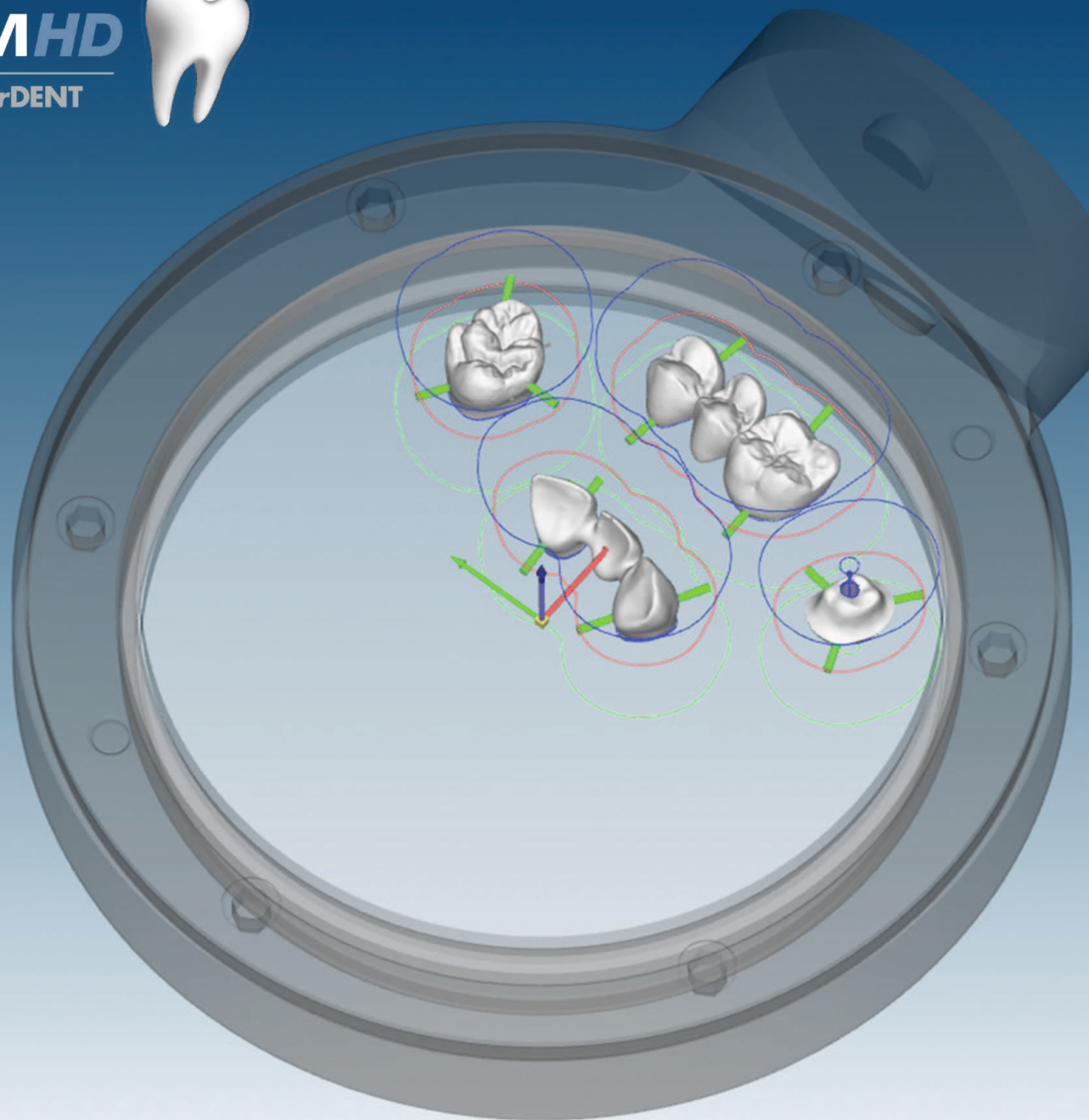


## DSM CONNECTION

The DSM connection enables live monitoring of your machine systems and targeted optimization of your workflow.

- ✓ Automatic updates & 24/7 access
- ✓ View machine status live
- ✓ Maintenance reminder
- ✓ Warranty protection
- ✓ Machine park overview





# Smart High-End Solution

PERFECTLY INTEGRATED CAM SOFTWARE  
FOR ALL CORiTEC MACHINES, MATERIALS  
AND INDICATIONS

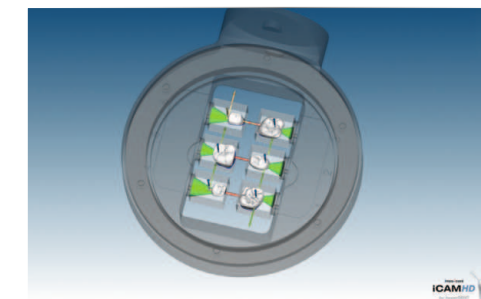
## CORiTEC® iCAMHD

The CORiTEC iCAMHD software combines a high level of automation with efficient order management. Thanks to the intuitive workflow, familiarization is quick and easy, while processing options can be managed individually. Automatic updates keep the software up to date at all times. Validated strategies ensure precise results and excellent surface quality, while integrated collision monitoring guarantees maximum safety in process control.

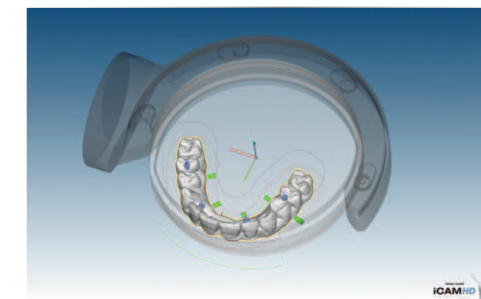
- ✓ hyperDENT based CAM software
- ✓ 1 year free use of the software  
(annual license fee thereafter)
- ✓ CAM templates for fast and precise results

iCAM HD advantages at a glance:

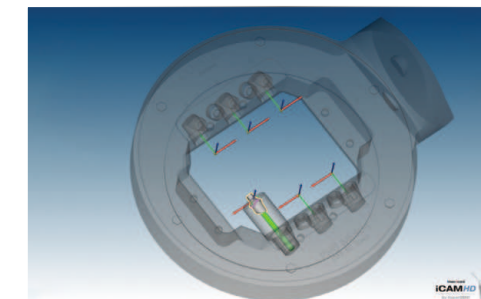
- ✓ High level of automation for more efficient production
- ✓ Intuitive workflow that enables fast familiarization
- ✓ Automatic updates that always keep the software up to date
- ✓ Tool path strategies for perfect surface quality
- ✓ Collision monitoring for maximum safety and reliability



6-fold holder for ceramic blocks

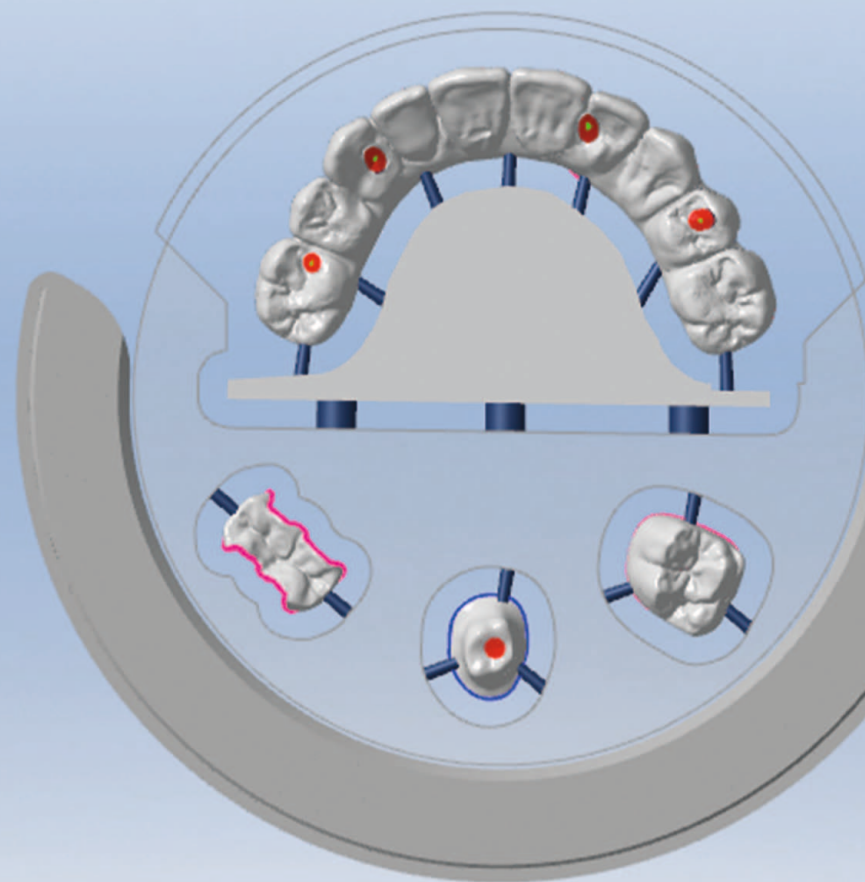
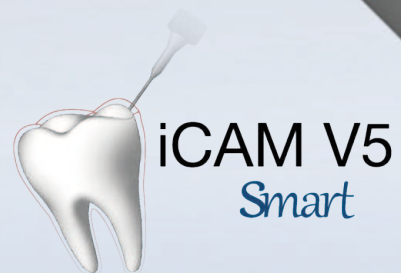


Various applications in the C-Clamp holder



6-fold CORiTEC preMill holder





# Flexible and Smart

PERFECTLY INTEGRATED CAM SOFTWARE  
FOR ALL CORiTEC MACHINES, MATERIALS  
AND INDICATIONS

## CORiTEC® iCAM V5 smart

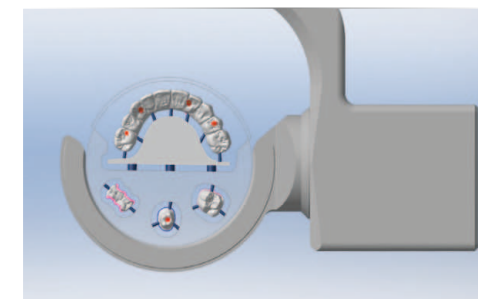
The CORiTEC iCAM V5 stands for exceptional surface quality and maximum accuracy of fit – ideal for all common dental materials. Optimized tool strategies reduce machining time, extend tool life and ensure particularly smooth machine operation. This ensures precise results in 5-axis machining and maximum efficiency of your CAD/CAM system.

Advantages at a glance:

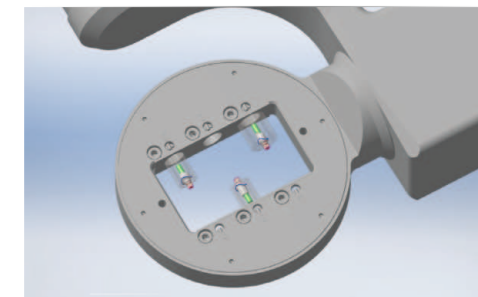
- ✓ **5-axis simultaneous processing:** Precision even with undercuts
- ✓ **No enforced annual fees:** Maximum cost efficiency
- ✓ **Wizard workflow:** Fully automatic, intuitive operation
- ✓ **ReFit function:** Flexible exchange of abutment geometries
- ✓ **Retaining bars:** Securely positioned for optimum results



6-fold holder for ceramic blocks



Various applications in the C-Clamp holder



6-fold CORiTEC preMill holder

# Coordinated, Validated Workflow of the Overall System

## SEAMLESSLY INTERLOCKING PROCESSES

The combination of iCAM software, high-quality milling machines and specially developed CORiTEC tools provides you with a validated complete system with full service and support from a single source. imes-icore represents first-class production solutions that seamlessly combine software, precise milling and grinding tools and high-performance machine technology.





# Perfect Synergy

## Between Machine, Milling Tools, iCAM and Materials

### CORiTEC® temp PMMA disc

CORiTEC temp PMMA disc is suitable for the fabrication of:

- ✓ Long-term temporary crown and bridge restorations (up to 3 years) in the anterior and posterior region with up to 2 pontics
- ✓ Splints for therapeutic restorations for temporomandibular joint problems and functional diagnostics
- ✓ Denture bases
- ✓ Temporary anterior veneers for esthetic shape corrections

### LONG RADIUS CUTTER



## Cutters and Grinders

### CORiTEC® TOOLS

CORiTEC milling tools guarantee precision and efficiency. Perfectly matched to our machines, they offer maximum performance, durability and optimum results – combined with the right materials for your applications.

- ✓ High-speed milling tools
- ✓ Torus milling tools
- ✓ Shaft tools
- ✓ Drilling tools
- ✓ Thread milling tools
- ✓ Aligner milling tools
- ✓ T-milling tools
- ✓ Standard milling tools

## CAD/CAM Materials

### CORiTEC® MATERIALS

Our specially developed materials are perfectly matched to CORiTEC machines and guarantee maximum precision and quality. Made in Germany and validated for a wide range of applications, they meet the highest standards for the best results.

- ✓ priti®multidisc
- ✓ CORiTEC® splint comfort Polymere
- ✓ CORiTEC® splint basic Polymere
- ✓ CORiTEC® temp PMMA disc
- ✓ CORiTEC® gum PMMA disc
- ✓ CORiTEC® CoCr M6 / W8 disc
- ✓ GC® Initial LiSi Block
- ✓ GC® cerasmart270
- ✓ VITA ENAMIC® multiColor
- ✓ VITA VIONIC® BASE DISC HI
- ✓ VITA CAD-Temp®
- ✓ VITA YZ HT / VITA YZ T
- ✓ VITA YZ ST / VITA YZ XT
- ✓ VITA BLOCS® Mark II
- ✓ VITA SUPRINTITY® PC
- ✓ VITA ST, TriLuxe forte
- ✓ VITA YZ MULTITRANSLUCENT

ALL TOOLS  
AT A GLANCE



To the milling tool brochure

ALL MATERIALS  
AT A GLANCE



To CORiTEC Materials  
[www.pritidenta.com](http://www.pritidenta.com)

# Suction Systems

## DUST PROTECTION AND AIR CLEANING

iVAC silent **PRO**    iVAC eco+    iVAC **PRO+**

Technical data			
Volume flow	240 m³/h	260 m³/h	280 m³/h
Power	1610 W	1200 W	1200 W
Filter system	Teflon filter cartridge, automatic cleaning	Filter bag, HEPA filter	Teflon filter cartridge, automatic cleaning
Filter flow	8 l/min / 2.11 gpm	25 l/min / 6.6 gpm	15 l/min / 3.96 gpm
Compatibility			
CORiTEC 250i PRO+ Series	●●○	●●●	●●●



# Scanner

## DIGITAL IMPRESSION

CORiTEC® i3Dscan **color** HR

- ✓ Enormously high scanning efficiency and precision
- ✓ Color texture scan
- ✓ Blue-light LED & high-resolution camera (2.8 MP)
- ✓ All modules included in the scope of delivery



CORiTEC® i3Dscan **color**

- ✓ Automatic object guidance into the measuring field
- ✓ Modern touch operation
- ✓ Easy to work with 180° opening

# Sintering Furnaces

## SINTERING PROCESS FOR ZIRCONIA

iSINT eco

The iSINT eco combines high-quality technology with a space-saving design and a fair price. With a sintering dish of Ø 100 mm, it offers capacity for up to 25 units. The door hinge can be flexibly mounted on the right or left – ideal for a versatile laboratory environment.

iSINT **PRO**

The iSINT PRO enables the sintering of up to 80 individual crowns. With four MoSi2 heating elements, it offers both long-term sintering and SPEED sintering at up to 90°C/minute. A 4-line LCD display simplifies program control. Additional functions such as timer and service programs as well as a pre-drying program make the iSINT PRO a flexible solution for modern laboratories.

iSINT eco    iSINT **PRO**

Technical data		
Heating elements	4	4
Program memories	9	30
Combustion chamber capacity	1 x 100 (approx. 25 units)	2 x 120 (approx. 80 units)
Max. Heating rate	30 °C/min / 86 °F/min	90 °C/min / 194 °F/min
Power	1720 W	3200 W
Lift function	-	✓
Speedsintering	-	✓





# Machine Tables

## SOPHISTICATED FUNCTIONALITY

Our machine tables have been specially developed for different machine types and offer a combination of stability, functionality and modern design – for maximum efficiency and an attractive appearance.

The machine tables offer storage space, stable castors, integrated drawers and an area for extraction systems – ideal for daily use.

- ✓ Highest quality – Made in Germany
- ✓ High level of comfort and ergonomics
- ✓ Stability for dynamic processes
- ✓ Modern design
- ✓ Push-to-open function



# Everything at a Glance

## CORiTEC® 250i PRO+ SERIES IN NUMBERS

CORiTEC  
250i PRO+

CORiTEC  
250i Loader PRO+

Mechanics / electronics		
Basic structure (exterior)	Aluminum casting	
Number of axes / operation type	5 axes, simultaneous processing	
Rotation angle	A axis 360° / B axis up to ±30°	
Spindle type	High frequency spindle	
Max. spindle speed / power	60.000 rpm, 1 kW	
Zero point clamping system	✔ *	
Blank changer	Manual	Up to 6 blanks with stainless steel holder
Tools	Milling and grinding tools with 6 mm shaft	
Tool changer	10-fold (tool magazine exchangeable)	
Tool length control	10-fold (tool magazine exchangeable ≤ 0.002 mm accuracy)	
Software	SmartControl™, Windows based	
Control PC / Display	Integrated control PC / 10.1" full HD touchscreen	
Illumination	RGB LED illumination with status signaling	
Air pressure	7,0 bar / 101.53 psi @ 60 l/min / 15.85 gpm	
Coolant tank	3,7 l / 0.98 gal	
Connection requirements		
Weight	95 kg	ca. 112 kg
Width x depth x height	591 x 613 x 724 mm / 23.3 x 24.1 x 28.5 inch	790 x 613 x 724 mm / 31.1 x 24.1 x 28.5 inch
Line voltage / frequency	100 V – 240 V / 50/60 Hz	

\* CORiTEC 250i PRO+ is also available with a manual clamping system

# Cost-Efficient Precision for Dry Processing

## CORiTEC® 250i LOADER dry

The CORiTEC 250i Loader dry has been specially developed for dry processing and offers a cost-effective alternative to other machine series without sacrificing automation.

- ✓ 7-position blank changer
- ✓ Interchangeable blank and tool magazine
- ✓ Integrated control PC and touchscreen
- ✓ Integrated 2-fold ionizer
- ✓ High-frequency spindle
- ✓ Autocalibration
- ✓ Automated cleaning function
- ✓ High precision due to integrated temperature compensation



5 AX

5 Axes  
Processing

DRY

Only Dry  
Processing

3 mm

16x

3 mm  
Shaft Tools

7x

7-fold  
Blank Holder



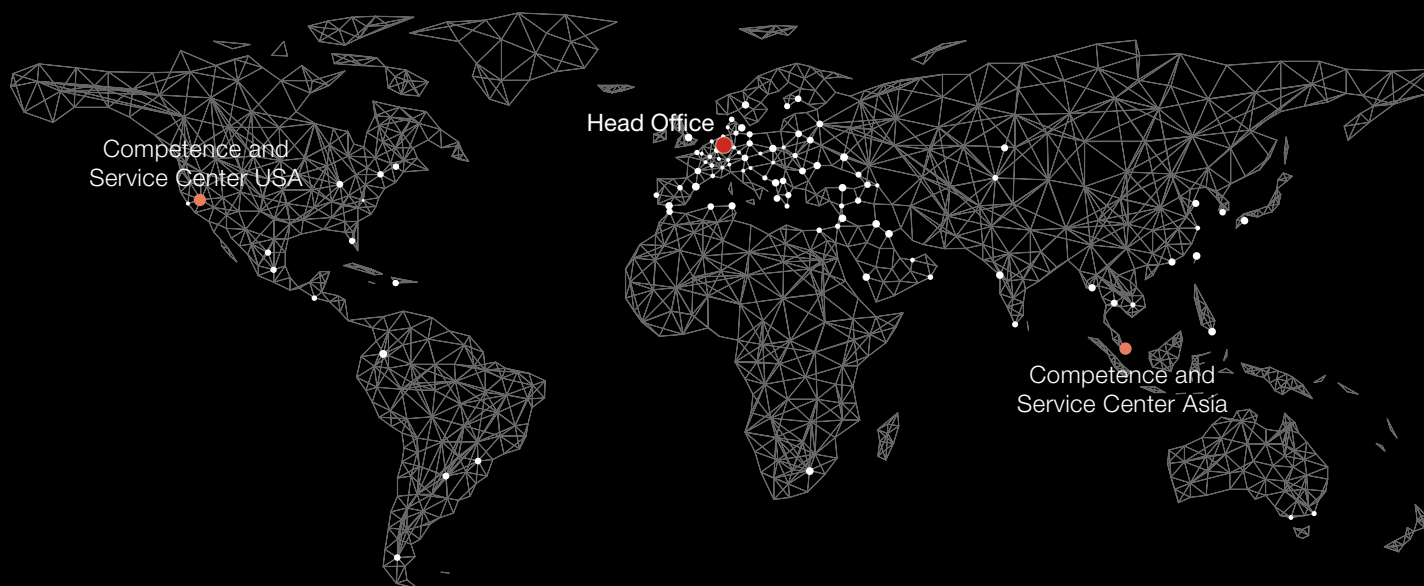
Thanks to the automatic quick clamping system, holder systems can be changed quickly and precisely – without the need for calibration. This makes many dry processing applications possible in automatic mode.

The CORiTEC 250i Loader dry combines technology, efficiency and cost benefits and is the ideal choice for laboratories looking for a reliable, economical solution.



# Global Support

SALES AND SUPPORT PARTNERS  
IN OVER 100 COUNTRIES



Since 2002, imes-icore® has been a leader in CAD/CAM systems for the dental industry. With customized solutions for laboratories, milling centers and dental practices of all sizes, we offer high-performance milling and grinding systems. Our open system philosophy guarantees easy integration into existing workflows.



To the imes-icore  
website



Configure machine  
directly

**imes-icore®**  
Dental & Medical Solutions

**imes-icore GmbH**  
Im Leibolzgraben 16  
36132 Eiterfeld

☎ +49 (0) 66 72/898 228  
✉ [dental@imes-icore.com](mailto:dental@imes-icore.com)  
[www.imes-icore.com](http://www.imes-icore.com)