






imes-icore<sup>®</sup>  
Dental & Medical Solutions



# CORiTEC 350i series

# The CORiTEC 350i series

WHAT ARE THE DIFFERENCES?

|   | COR TEC<br>350i      |   | COR TEC<br>350i Loader |        | COR TEC<br>350i PRO  |  | COR TEC<br>350i Loader PRO |   | COR TEC<br>350i PRO+  |        | COR TEC<br>350i Loader<br>PRO+  |  |
|---|----------------------|---|------------------------|--------|--|--|----------------------------|---|-----------------------|--------|---|--|
| Motor technology                              | Servo with encoder   |   |                        |        | Servo with absolute encoder  |  |                            |   |                       |        |   |  |
| Resolution                                    | 10.000 Inc (0.5 µm)  |   |                        |        | 32.000 Inc (0.15 µm)   |  |                            |   |                       |        |   |  |
| Base structure                                | Steel/aluminum       |   |                        |        | Polymer concrete, steel rails  |  |                            |   |                       |        |   |  |
| Screen  | 12“ touchscreen      |   |                        |        | 15“ HD touchscreen   |  |                            |   |                       |        |   |  |
| Housing                                       | Mat (frosted) design |   |                        |        | Shiny design, LED illumination   |  |                            |   |                       |        |   |  |
| Fully automatic<br>workpiece blankchanger     | Manual               |  12-fold |                        | Manual |  12-fold |  | Manual                     |  12-fold |                       | Manual |  12-fold |  |
| Blankholder inclusive                         | 1                    | 6   |                        | 2      | 8  |  | 2                          | 8   |                       | 2      | 8   |  |
| Absolute<br>measurement system<br>in all axes | -                    | -   |                        | ✓      | ✓  |  | ✓                          | ✓   |                       | ✓      | ✓   |  |
| Spindle power                                 | 1.0 kW               | 1.0 kW  |                        | 1.0 kW | 1.0 kW   |  | 2.6 kW                     | 2.6 kW  |                       | 2.6 kW | 2.6 kW  |  |
| Spindle bearing                               | Two hybrid bearings  |   |                        |        |  |  |                            |   | Three hybrid bearings |        |   |  |
| Collet  | 6 mm                 |   |                        |        |  |  |                            |   | 6 mm (self cleaning)  |        |   |  |
| Zero point<br>clamping system                 | Optional             | ✓   |                        | ✓      | ✓  |  | ✓                          | ✓   |                       | ✓      | ✓   |  |
| Cooling system spindle                        | Air cooled           |   |                        |        |  |  |                            |   | Water cooling system  |        |   |  |



THE BUSINESS CLASS  
of dental  
CAD/CAM machines!





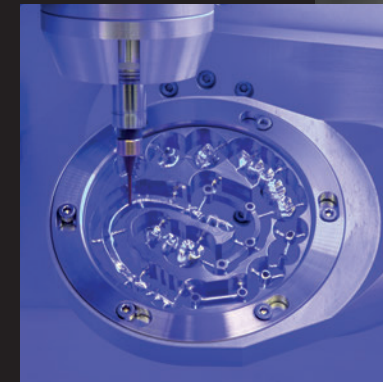
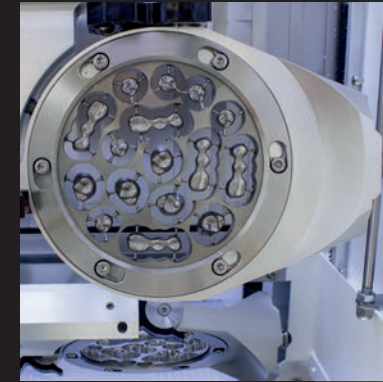
# CORiTEC 350i/350i Loader

## THE AUTOMATED ALL-IN-ONE SOLUTION

The CORiTEC 350i processing system is an innovative machine concept, developed to meet any requirements of modern CAD/CAM processing. The processing of all relevant blank materials of cobalt chrome, titanium, zirconium dioxide, plastics, block materials, and new future materials is thus possible with a single machine system, virtually without restrictions.

The optional zero-point clamping system of the CORiTEC 350i allows a simple blank change of the complete blank holder at the push of a button. In addition, the zero point clamping system can be used to clamp a wide range of adapter the system can be used for a variety of applications, e.g. different PreFab abutment holders, glass ceramic holders or the C-Clamp.

The CORiTEC 350i Loader with fully automated blank magazine also enables versatile machining of up to 12 blanks in unmanned operation.



- WET
- DRY
- 5 AX
- 6 mm  
20x
- 12x
- ION



# CORiTEC 350i

SIMPLE  
TOUCHSCREEN  
OPERATING

20-FOLD  
TOOL CHANGER

STABLE CHASSIS  
CONSTRUCTION



INTEGRATED  
WET AND DRY  
PROCESSING

INTEGRATED TEMPERATURE  
COMPENSATION

OPTIONAL  
IONIZER  
POSSIBLE

|                          |                               |
|--------------------------|-------------------------------|
| PMMA                     | WAX                           |
| Zr                       | COMPOSITE                     |
| PEEK                     | SINT                          |
| Glass ceramics           | PreFab Abutments              |
| CoCr                     | Ti                            |
| Standard                 | C-Clamp                       |
| PreMilled Abutment       | Block                         |
| Dentures                 | zero-point<br>clamping system |
| Crowns,<br>Bridges       | Hybrid<br>Abutment            |
| Inlay, Onlay,<br>Veneer  | Splint                        |
| Full Denture             | Drilling<br>template          |
| Model                    | Model<br>casting              |
| Bridge                   | Abutments                     |
| Telescopic<br>technology | Hybrid<br>machining           |

# CORiTEC 350i Loader

FULLY AUTOMATIC  
12-FOLD BLANK  
CHANGER

INTEGRATED  
WET AND DRY  
PROCESSING

AROUND THE CLOCK  
24 hours production  
operation

ZERO POINT CLAMPING  
SYSTEM INTEGRATED

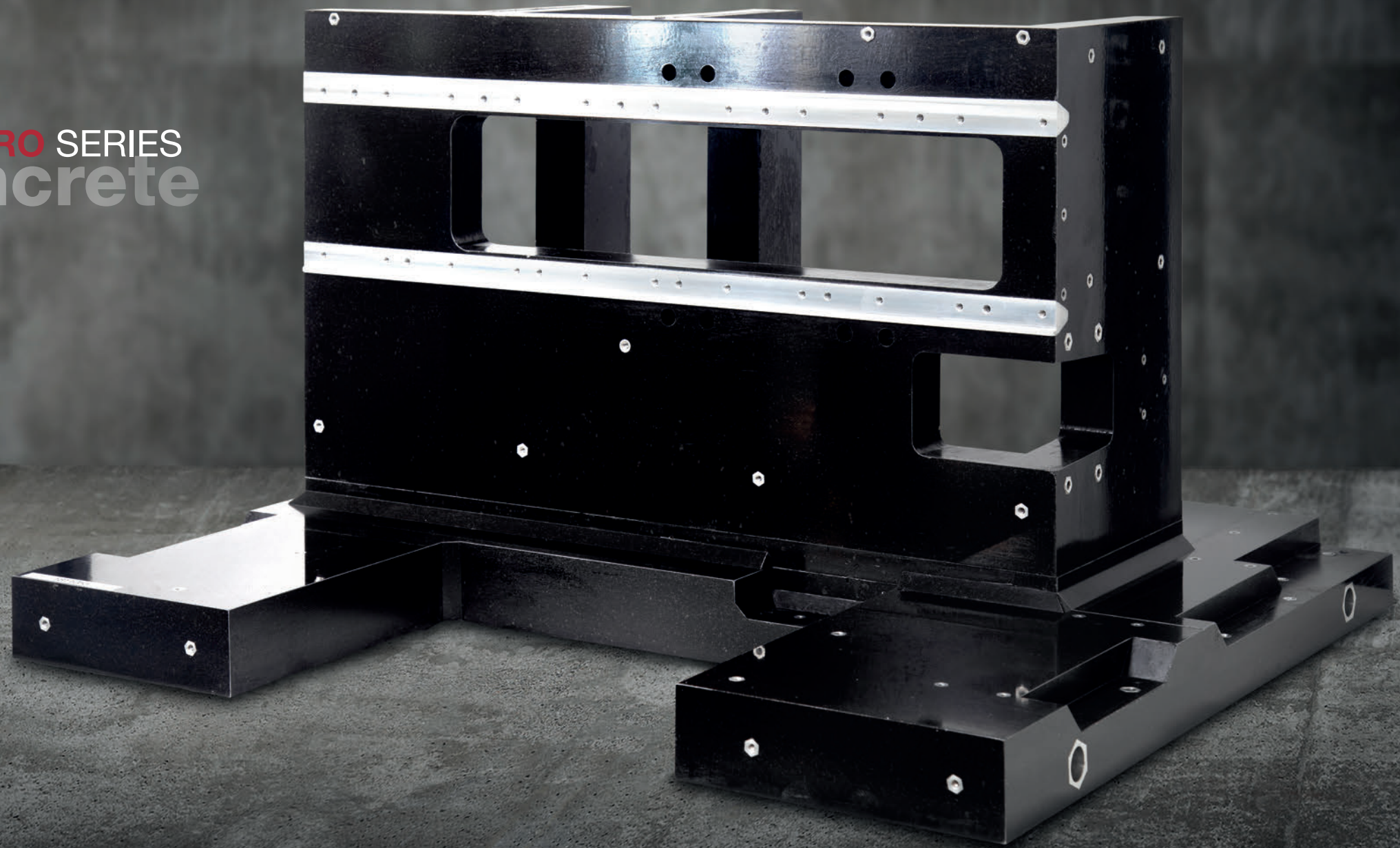


INTEGRATED TEMPERATURE  
COMPENSATION

OPTIONAL  
IONIZER  
POSSIBLE



CORITEC 350i PRO SERIES  
polymer concrete  
base





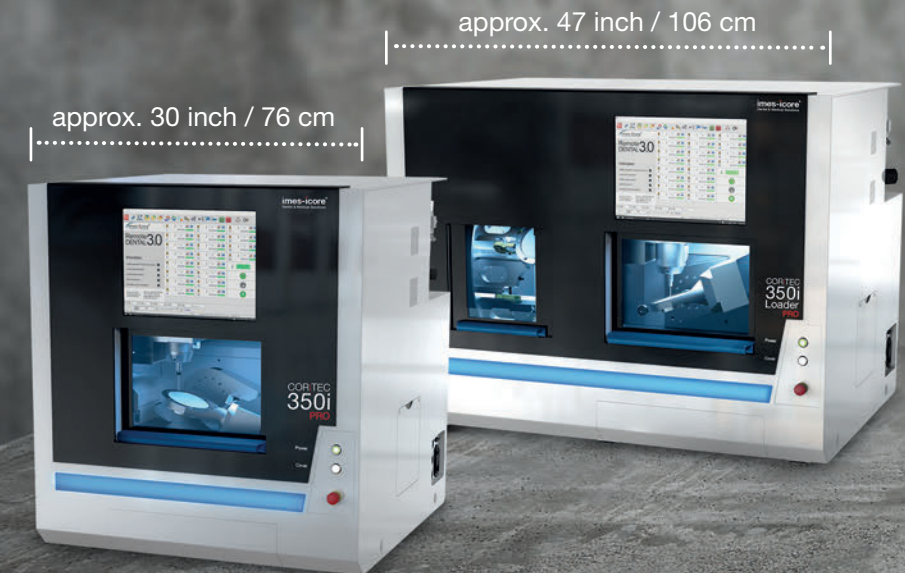
# CORiTEC 350i PRO/350i Loader PRO

## THE PROFESSIONAL SOLUTION FOR HIGHEST DEMANDS

The high-resolution dynamic servo motors with absolute measuring systems used in the CORiTEC 350i PRO series guarantee up to 20 % faster machining with optimum precision.

A further advantage of the PRO series is that this machine system is constructed from a one-piece machine frame made of polymer concrete and thus guarantees the highest possible stability for vibration-free machining.

The CORiTEC 350i Loader PRO with fully automated blank magazine also enables versatile machining of up to 12 blanks in unmanned operation. Due to the precise repositioning of the zero point clamping system, different PreFab abutment holders can be used.



- WET
- DRY
- 5 AX
- 6 mm  
20x
- 6 mm
- 20x
- ION
- optional



# CORiTEC 350i PRO

ALL CAD/CAM MATERIALS  
CAN BE PROCESSED

15 INCH  
TOUCHSCREEN

INTEGRATED  
WET AND DRY  
PROCESSING

ABSOLUTE MEASURING  
SYSTEM IN ALL AXES

ZERO-POINT  
CLAMPING  
SYSTEM  
STANDARD

REVOLUTIONARY  
BASE STRUCTURE OF  
POLYMER CONCRETE

20-FOLD  
TOOL CHANGER

INTEGRATED TEMPERATURE  
COMPENSATION



|                       |                            |
|-----------------------|----------------------------|
| PMMA                  | WAX                        |
| Zr                    | COMPOSITE                  |
| PEEK                  | SINT                       |
| Glass ceramics        | PreFab Abutments           |
| CoCr                  | Ti                         |
| Standard              | C-Clamp                    |
| PreMilled Abutment    | Block                      |
| Dentures              | zero-point clamping system |
| Crowns, Bridges       | Hybrid Abutment            |
| Inlay, Onlay, Veneer  | Splint                     |
| Full Denture          | Drilling template          |
| Model                 | Model casting              |
| Bridge                | Abutments                  |
| Telescopic technology | Hybrid machining           |

# CORiTEC 350i Loader PRO

FULLY AUTOMATIC  
12-FOLD BLANK CHANGER

USE OF DIFFERENT ADAPTER SYSTEMS  
e.g. prefabricated abutments or block materials

INTEGRATED  
WET AND DRY  
PROCESSING

AROUND THE CLOCK  
24 hours of production

ZERO POINT  
CLAMPING  
SYSTEM

OPTIONAL  
IONIZER  
POSSIBLE



NEW, HIGH-DYNAMIC SERVO DRIVES  
for up to 20 % quicker processing

INTEGRATED  
TEMPERATURE  
COMPENSATION



# CORiTEC 350i PRO<sup>+</sup>/350i Loader PRO<sup>+</sup>

## THE PLUS OF PERFORMANCE AND PRECISION

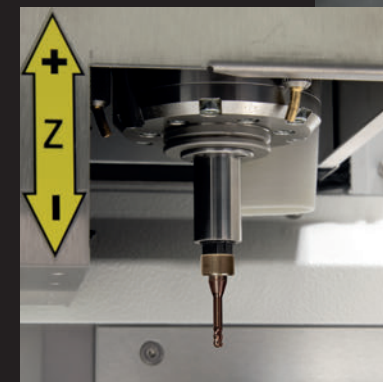
As already implemented in the CORTEC 350i PRO, the CORTEC 350i PRO<sup>+</sup> series also comes with high-resolution dynamic servo motors and absolute measuring systems. To use this advanced technology and to be able to fully exploit its full potential, the CORTEC 350i PRO<sup>+</sup> is equipped with a water-cooled, powerful 2.6 kW spindle with 3-fold hybrid ball bearing (water-cooled). Reaching the stability and reducing vibrations is given by the massive stainless steel blank holders.

The water cooling ensures a constant temperature of the milling spindle, so thermal expansion of the milling spindle is significantly minimized and enables even more precise milling results.

The CORITEC 350i Loader PRO<sup>+</sup> with fully automated blank magazine also enables the versatile machining of up to 12 blanks in unmanned operation.



**Zero-point clamping system for stainless steel blank holder**



WET

DRY

5 AX



6 mm  
20x



ION

option



# CORiTEC 350i PRO<sup>+</sup>



HIGH-RESOLUTION DYNAMIC  
SERVO MOTORS  
with absolute measuring system

INTEGRATED  
WET AND DRY  
PROCESSING

20-FOLD  
TOOL CHANGER

OPTIONAL  
IONIZER  
POSSIBLE



STAINLESS STEEL BLANK HOLDER

INTEGRATED  
TEMPERATURE  
COMPENSATION

|                          |                               |
|--------------------------|-------------------------------|
| PMMA                     | WAX                           |
| Zr                       | COMPOSITE                     |
| PEEK                     | SINT                          |
| Glass ceramics           | PreFab Abutments              |
| CoCr                     | Ti                            |
| Standard                 | C-Clamp                       |
| PreMilled Abutment       | Block                         |
| Dentures                 | zero-point<br>clamping system |
| Crowns,<br>Bridges       | Hybrid<br>Abutment            |
| Inlay, Onlay,<br>Veneer  | Splint                        |
| Full Denture             | Drilling<br>template          |
| Model                    | Model<br>casting              |
| Bridge                   | Abutments                     |
| Telescopic<br>technology | Hybrid<br>machining           |

# CORiTEC 350i Loader PRO<sup>+</sup>

STAINLESS STEEL  
BLANK HOLDER

INTEGRATED  
WET AND DRY  
PROCESSING

AROUND THE CLOCK  
24 hours of production

OPTIONAL IONIZER  
POSSIBLE



NEW, HIGH-DYNAMIC SERVO DRIVES  
for up to 20 % quicker processing

INTEGRATED  
TEMPERATURE  
COMPENSATION

# Applications & holder

## HALF-OPEN BLANK HOLDER (C-CLAMP)

- Enables 5-axis machining up to 90 degrees axis adjustment
- Extension of the technical possibilities of your milling machine
- End face machining



## MANUFACTURE OF DENTAL PROSTHESES

- Baltic Denture from Merz Dental
- Dentsply Sirona Dentures



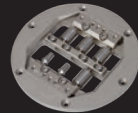
## PREFABRICATED ABUTMENTS

- Short production times
- Production of abutments in very simple processes
- High accuracy of fit due to prefabricated implant interface

DESS  
Abutmentholder



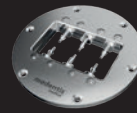
NT-Preform® Abutment  
(nt-trading)



PreFace® Abutment  
(Medentika)



MED-Preform® Abutment  
(medentis)



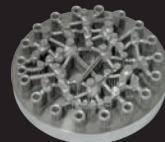
## THERAPEUTIC SPLINTS

- Bite splints, bleaching splints
- Snoring splints, aligners
- Simple and high-quality implementation in CAD/CAM processes



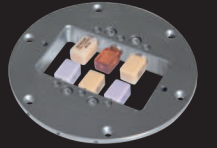
## HYBRID MACHINING - SINTERING AND MILLING\*

- Milling post-processing of finished restorations using the SLM method
- High precision milling combined with low-cost SLM process
- Compatible with most SLM systems



## GRINDING OF CAD/CAM BLOCKS

- New 6-fold adapter enables effective production
- Exchangeable strips for different adapter systems
- Crowns, onlays, inlays, veneers, bridge frameworks, etc.



## IMPLANT-SUPPORTED BRIDGES AND BARS / ONE-PIECE ABUTMENTS\*

- Highest fitting accuracy due to new CAM technologies (ReFit)
- Stress-free fit even with larger spans
- Easy production due to high degree of automation with coordinated CAM software



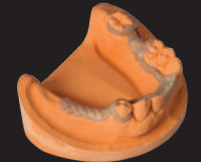
## BIOHPP ELEGANCE PREFABS

- Individual hybrid abutment on PEEK basis
- BioHPP for permanent dentures, free of metal, oxide and monomer
- Homogeneous combination of titanium and BioHPP



## MILLING OF MODEL CASTS

- Production in combustible materials, PEEK or directly in CoCr
- Allergy-free and lightweight model casting when using PEEK
- Cost-efficient



## MILLED IMPLANT MODELS

- DIM (Digital Implant Model) from nt-trading
- Precisely positionable
- 2-part implant analog



## MODEL MILLING BAUMANN SYSTEM

- Model fabrication in CAD/CAM process
- High reproducibility and precision
- Model fabrication with digital impression by intraoral scanner



\*only for COR.TEC 350i PRO<sup>+</sup> in preparation



**T1/T6 - 3.0 | 6.0 mm**  
radius milling tool short (l = 15 mm)

|    |      |
|----|------|
| T1 | Ti   |
| T6 | CoCr |

3,0 mm Ø 6 mm

up to 15 mm

Blades

Art.-No. 526029 3006

**T11 - 2.5 | 6.0 mm**  
radius milling tool (single blade, slide coated)

|     |                     |
|-----|---------------------|
| T11 | PMMA<br>WAX<br>PEEK |
|-----|---------------------|

2,5 mm Ø 6 mm

up to 25 mm

Blade

Art.-No. 526004 2506

**T14/T41/T51 - 1.0 | 6.0 mm**  
radius milling tool (diamond coated)

|     |      |
|-----|------|
| T14 | Zr   |
| T41 | SINT |
| T51 | COMP |

1,0 mm Ø 6 mm

up to 25 mm

Blades

Art.-No. 526013 1006

**T19 - 0.5 | 6.0 mm**  
shaft milling tool (l = 4 mm)

|     |           |
|-----|-----------|
| T19 | UNIVERSAL |
|-----|-----------|

0,5 mm Ø 6 mm

up to 15 mm

Blades

Art.-No. 526001 0506

**T2/T7 - 2.0 | 6.0 mm**  
radius milling tool short (l = 12 mm)

|    |      |
|----|------|
| T2 | Ti   |
| T7 | CoCr |

2,0 mm Ø 6 mm

up to 15 mm

Blades

Art.-No. 526029 2006

**T11/T13 - 2.5 | 6.0 mm**  
radius milling tool

|     |             |
|-----|-------------|
| T11 | PMMA<br>WAX |
| T13 | Zr          |

2,5 mm Ø 6 mm

up to 25 mm

Blades

Art.-No. 526019 2506

**T15/T42/T52 - 0.6 | 6.0 mm**  
radius milling tool (conical)

|     |                   |
|-----|-------------------|
| T15 | PMMA<br>WAX<br>Zr |
| T42 | SINT              |
| T52 | COMP              |

0,6 mm Ø 6 mm

up to 25 mm

Blades

Art.-No. 526019 0606

**T20 - 0.6 | 6.0 mm**  
radius milling tool (conical)

|     |            |
|-----|------------|
| T20 | Ti<br>CoCr |
|-----|------------|

0,6 mm Ø 6 mm

up to 15 mm

Blades

Art.-No. 526003 0606

**T3/T8 - 1.5 | 6.0 mm**  
radius milling tool short (l = 12 mm)

|    |      |
|----|------|
| T3 | Ti   |
| T8 | CoCr |

1,5 mm Ø 6 mm

up to 15 mm

Blades

Art.-No. 526029 1506

**T12 - 1.0 | 6.0 mm**  
radius milling tool (single blade, slide coated)

|     |                     |
|-----|---------------------|
| T12 | PMMA<br>WAX<br>PEEK |
|-----|---------------------|

1,0 mm Ø 6 mm

up to 25 mm

Blade

Art.-No. 526004 1006

**T16 - 1.5 | 6.0 mm**  
radius milling tool long (l = 15 mm)

|     |                     |
|-----|---------------------|
| T16 | PMMA<br>WAX<br>PEEK |
|-----|---------------------|

1,5 mm Ø 6 mm

up to 25 mm

Blades

Art.-No. 526019 1506

**T21 - 2.5 | 6.0 mm**  
radius milling tool (diamond)

|     |                |
|-----|----------------|
| T21 | glass ceramics |
|-----|----------------|

2,5 mm Ø 6 mm

up to 15 mm

Blades

Art.-No. 526005 2506

**T4/T9 - 1.0 | 6.0 mm**  
radius milling tool short (l = 9 mm)

|    |      |
|----|------|
| T4 | Ti   |
| T9 | CoCr |

1,0 mm Ø 6 mm

up to 15 mm

Blades

Art.-No. 526029 1006

**T12/T14 - 1.0 | 6.0 mm**  
radius milling tool

|     |             |
|-----|-------------|
| T12 | PMMA<br>WAX |
| T14 | Zr          |

1,0 mm Ø 6 mm

up to 25 mm

Blades

Art.-No. 526019 1006

**T17 - 1.5 | 6.0 mm**  
shaft milling tool (l = 15 mm)

|     |                   |
|-----|-------------------|
| T17 | PMMA<br>WAX<br>Zr |
|-----|-------------------|

1,5 mm Ø 6 mm

up to 25 mm

Blades

Art.-No. 526001 1506

**T22 - 1.0 | 6.0 mm**  
radius milling tool (diamond)

|     |                |
|-----|----------------|
| T22 | glass ceramics |
|-----|----------------|

1,0 mm Ø 6 mm

up to 15 mm

Blades

Art.-No. 526005 1006

**T5/T10 - 1.5 | 6.0 mm**  
shaft milling tool short (l = 12 mm, four blades)

|     |      |
|-----|------|
| T5  | Ti   |
| T10 | CoCr |

1,5 mm Ø 6 mm

up to 15 mm

Blades

Art.-No. 526002 1506

**T13/T40/T50 - 2.5 | 6.0 mm**  
radius milling tool (diamond coated)

|     |      |
|-----|------|
| T13 | Zr   |
| T40 | SINT |
| T50 | COMP |

2,5 mm Ø 6 mm

up to 25 mm

Blades

Art.-No. 526013 2506

**T18 - 0.5 | 6.0 mm**  
radius milling tool (l = 4 mm)

|     |           |
|-----|-----------|
| T18 | UNIVERSAL |
|-----|-----------|

0,5 mm Ø 6 mm

up to 15 mm

Blades

Art.-No. 526026 0506

**T23 - 0.6 | 6.0 mm**  
radius milling tool (conical, diamond)

|     |                |
|-----|----------------|
| T23 | glass ceramics |
|-----|----------------|

0,6 mm Ø 6 mm

up to 15 mm

Blades

Art.-No. 526005 0606

**T26 - 3.0 | 6.0 mm**  
radius milling tool long (l = 20 mm)

T26

|      |
|------|
| Ti   |
| CoCr |

3,0 mm Ø 6 mm

16 - 20 mm

Blades

Art.-No. 526030 3006

**T32 - 0.6 | 6.0 mm**  
radius milling tool long (l = 12 mm)

T32

|      |
|------|
| PMMA |
| WAX  |
| Zr   |

0,6 mm Ø 6 mm

up to 25 mm

Blades

Art.-No. 526012 0606

**T62 - 2.0 | 6.0 mm**  
torus milling tool (r = 0,2 mm, l = 16 mm, four blades)

T62

|      |
|------|
| Ti   |
| CoCr |

2,0 mm Ø 6 mm

up to 15 mm

Blades

Art.-No. 526025 2006

**T80 - 2.5 | 6.0 mm**  
drilling tool (l = 22 mm)

T80

|      |
|------|
| Ti   |
| CoCr |

2,5 mm Ø 6 mm

up to 20 mm

Drill

Art.-No. 526023 2506

**T27 - 2.0 | 6.0 mm**  
radius milling tool long (l = 16 mm)

T27

|      |
|------|
| Ti   |
| CoCr |

2,0 mm Ø 6 mm

16 - 20 mm

Blades

Art.-No. 526030 2006

**T33/ T43/ T53 - 0.3 | 6.0 mm**  
radius milling tool (conical)

T33

|      |
|------|
| PMMA |
| WAX  |
| Zr   |
| SINT |
| COMP |

0,3 mm Ø 6 mm

up to 25 mm

Blades

Art.-No. 526019 0306

**T63 - 1.5 | 6.0 mm**  
torus milling tool (r = 0,08 mm, l = 7 mm, two blades)

T63

|      |
|------|
| Ti   |
| CoCr |

1,5 mm Ø 6 mm

up to 15 mm

Blades

Art.-No. 526025 1506

**T81 - 1.5 | 6.0 mm**  
drilling tool (l = 18 mm)

T81

|      |
|------|
| Ti   |
| CoCr |

1,5 mm Ø 6 mm

up to 20 mm

Drill

Art.-No. 526023 1506

**T28 - 1.5 | 6.0 mm**  
radius milling tool long (l = 15 mm)

T28

|      |
|------|
| Ti   |
| CoCr |

1,5 mm Ø 6 mm

up to 25 mm

Blades

Art.-No. 526030 1506

**T34 - 3.0 | 6.0 mm**  
radius milling tool long (l = 27 mm)

T34

|      |
|------|
| PMMA |
| WAX  |

3,0 mm Ø 6 mm

up to 30 mm

Blades

Art.-No. 526012 3006

**T64 - 1.5 | 6.0 mm**  
torus milling tool (r = 0,08 mm, l = 15 mm, two blades)

T64

|      |
|------|
| Ti   |
| CoCr |

1,5 mm Ø 6 mm

up to 15 mm

Blades

Art.-No. 526028 1506

**T98 - 2.5 | 6.0 mm**  
shaft milling tool (l = 20 mm, three blades)

T98

|         |
|---------|
| CALIBR. |
|---------|

2,5 mm Ø 6 mm

Blades

Art.-No. 526024 2506

**T29 - 1.0 | 6.0 mm**  
radius milling tool long (l = 11 mm)

T29

|      |
|------|
| Ti   |
| CoCr |

1,0 mm Ø 6 mm

16 - 20 mm

Blades

Art.-No. 526030 1006

**T35 - 2.0 | 6.0 mm**  
radius milling tool long (l = 20 mm)

T35

|      |
|------|
| PMMA |
| WAX  |

2,0 mm Ø 6 mm

up to 30 mm

Blades

Art.-No. 526012 2006

**T67 - 2.0 | 6.0 mm**  
shaft milling tool short (l = 7 mm, four blades)

T67

|      |
|------|
| Ti   |
| CoCr |

2,0 mm Ø 6 mm

up to 15 mm

Blades

Art.-No. 526002 2006

**T30 - 4.0 | 6.0 mm**  
shaft milling tool long (l = 32 mm, single blade, slide coated)

T30

|      |
|------|
| PMMA |
| WAX  |
| PEEK |

4,0 mm Ø 6 mm

up to 30 mm

Blade

Art.-No. 526012 4006

**T61 - 3.0 | 6.0 mm**  
Quattro speed milling tool (l = 15 mm)

T61

|      |
|------|
| CoCr |
|------|

3,0 mm Ø 6 mm

up to 15 mm

Blades

Art.-No. 526025 3006

**T68 - 1.5 | 6.0 mm**  
shaft milling tool long (l = 15 mm, four blades)

T68

|           |
|-----------|
| UNIVERSAL |
|-----------|

1,5 mm Ø 6 mm

16 - 20 mm

Blades

Art.-No. 526021 1506



# CORiTEC Materials

## CORTEC ZR (ZIRCONIUM DIOXIDE)

Covers all indications for dental restorations of up to 16 units.  
Ideally suited for monolithic restorations.

- Highly translucent zirconium dioxide for natural esthetics
- Increased strength compared to lithium dioxide

Zr ht+ Disc  
(highly translucent)



Zr Disc



Zr transpa Disc



Zr transpa Disc  
(pre-colored translucent)



## CORTEC ZR (ZIRCONIUM DIOXIDE)

- Single crowns
- Single cap
- Bridges up to 16 units, full bridges, and PFM technology
- Good mechanical properties
- Good milling properties
- Corrosion resistant

CoCr Disc  
(non-precious alloy)



CoCr Mo Disc  
(non-precious alloy)



Ti Disc  
(Grad 2, Grad 4, Grad 5)



## CORTEC MODEL DISC IVORY

- Blank for the production of dental models
- Low-cost material
- Also suitable for test purposes or for milling calibration bodies



## JUVORA PEEK (POLYETHERETHERKETONE)

- Clamp-retained constructions
- Juvora PEEK in its basic colour (brown-beige)
- Highest biological compatibility



## CORTEC WAX DISC (WAX, GRAY)

CORTEC Wax Disc is not suitable for intraoral application.  
After milling, the material can be used as lost wax.  
Moulds can be used in casting technology.  
It can be milled easily and combusted residue-free.



## CORTEC PMMA (POLYMETHYL METHACRYLATE)

- Bite guards, therapeutic splints, drilling templates, bite regulators
- Very good mechanical properties
- Aesthetic shade effect due to high translucency
- Good milling behaviour

PMMA Splint Disc



PMMA Disc



# Scanner

COMPATIBLE WITH **exocad**

## CORiTEC i3Dscan eco

- All-round carefree package for newcomers or small laboratories
- Simple, fast, low-priced
- Very compact design

## CORiTEC i3Dscan color

- The object to be scanned is automatically guided into the measuring field
- Modern touch control design
- The 180-degree opening offers a large working area

## CORiTEC i3Dscan color HR

- Enormously high scanning efficiency and precision (4 µm)
- Color Texture scan
- Blue-Light LED & High resolution camera (2.8 MP)
- All modules included in the scope of delivery



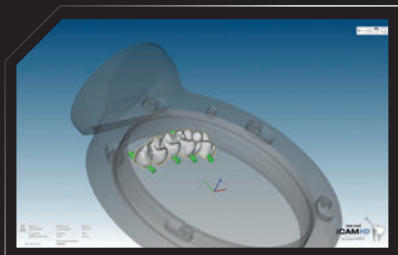
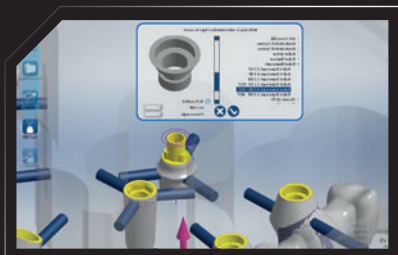
# CAM Software

## CORiTEC iCAM V5 smart

- All strategies optimized for 5-axis simultaneous machining
- Automatic exchange of implant connections (ReFit option)
- No annual license fees
- Fully automatic and easy operation with “Wizard Workflow”

## CORiTEC iCAMHD

- hyperDENT based CAM software
- Flexible payment model (purchase or subscription model)
- Three months free use with CORiTEC 150i machine purchase



# Machine tables

The undercounters, specially developed for the needs of the various machine types, impress with their sturdy design as well as their attractive appearance. The machine tables have sufficient floor space. Stable rollers ensure optimum stability and easy movement of the devices. Drawers, cable ducts and a cabinet for the integration of appropriate extraction systems are already provided.

| Machine Table T1  | Machine Table T2   |
|---|--|
| 30.3 x 36.6 x 31.1 inch<br>770 x 930 x 790 mm<br>W x H x D                      | 41.7 x 36.6 x 31.1 inch<br>1060 x 930 x 790 mm<br>W x H x D  |
| COR TEC 350i<br>COR TEC 350i <b>PRO</b><br>COR TEC 350i <b>PRO</b> <sup>+</sup> | COR TEC 350i Loader<br>COR TEC 350i Loader <b>PRO</b><br>COR TEC 350i Loader <b>PRO</b> <sup>+</sup> |

MACHINE TABLE T1

MACHINE TABLE T2



# Dust extraction systems

|                | iVAC eco+                                    | iVAC silent <b>PRO</b>                                 | iVAC <b>PRO</b> <sup>+</sup>                           |
|----------------|--|--|--|
| Volume flow    | 260m³/h                                      | 240 m³/h   | 280m³/h  |
| Output         | 1200 W                                       | 1610 W   | 1200 W   |
| Filter system  | Dust drawer,<br>HEPA filter                  | Teflon filter cartridge,<br>automatic cleaning feature | Teflon filter cartridge,<br>automatic cleaning feature |
| Filter volume  | 25 l   | 8 l  | 15 l   |
| W x D x H      | 7.3 x 18.1 x 29.5 inch<br>440 x 460 x 750 mm | 10.6 x 21.2 x 21.1 inch<br>270 x 540 x 535 mm          | 13.7 x 13.7 x 39.3 inch<br>350 x 350 x 1000 mm         |
| Supply voltage | 100-240V/<br>50/60Hz                         | 110V - 50/60Hz<br>230V - 50/60Hz                       | 100-240V/<br>50/60Hz                                   |





# Sintering furnances

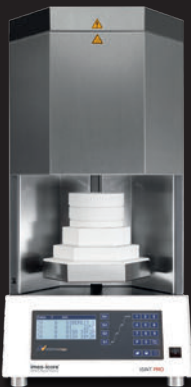
## iSINT eco

The **iSINT eco** stands for economy and offers high-quality technology, matching accessories for high standards at a fair price. Compact and with a small footprint, the **iSINT eco** sintering oven still has sufficient capacity for a sintering bowl Ø 100 mm for approx. 25 units. The door stop can be mounted right and left.



## iSINT PRO

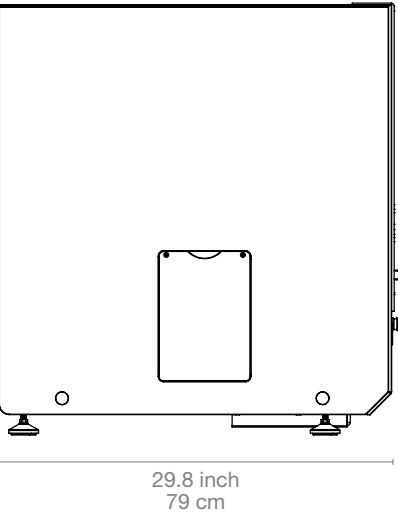
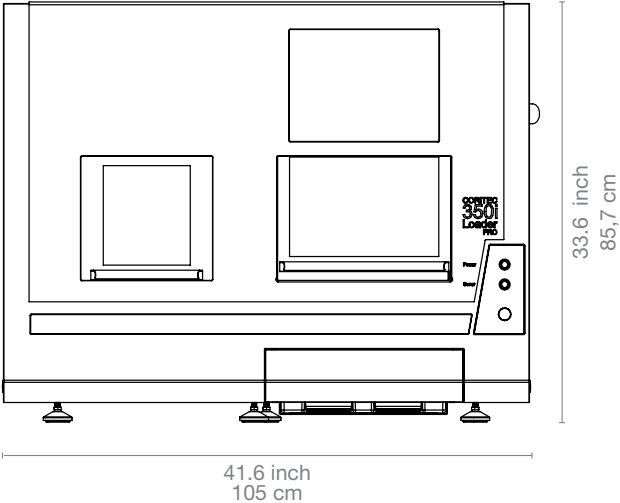
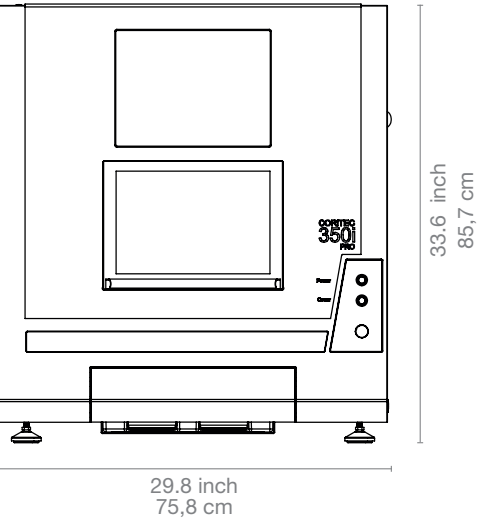
A larger sintering capacity of up to 80 single crowns is offered by the new **iSINT PRO**. With a heating system with four high-quality molybdenum disilicide (MoSi2) heating elements, you can choose between conventional long-term sintering or SPEED sintering at a rate of up to 99 °C/min/ 210.20 °F/min. The **iSINT PRO** is controlled by a simple and convenient program control. The programs are displayed on a 4-line LCD display. A timer function for overnight sintering or the use of pre-drying programs for shaded zirconium restorations offer further options. In addition, three service programs are available for easy maintenance of the sinter furnace.



|                            | iSINT eco                          | iSINT PRO                          |
|----------------------------|------------------------------------|------------------------------------|
| Number of heating elements | 4                                  | 4                                  |
| Display                    | 7-Segment                          | 4-line LCD                         |
| Number of program memories | 9                                  | 30                                 |
| Heating chamber capacity   | 1x sintering tray / 100mm diameter | 2x sintering tray / 120mm diameter |
| Max. heating rate          | 30°K/min                           | 99°K/min                           |
| Power in W                 | 1500 W                             | 3200 W                             |
| Lift function              | No                                 | Yes                                |
| Speedsintering             | No                                 | Yes                                |
| Supply voltage / frequency | 220-240V/ 50-60Hz                  | 200-240V/ 50-60Hz                  |

# Dimensions

## CORiTEC 350i series



# CORiTEC 350i series in numbers

|                                       | COR TEC 350i                                      | CORiTEC 350i Loader                               | CORiTEC 350i PRO                                  | CORiTEC 350i Loader PRO                           | COR TEC 350i PRO <sup>+</sup>                     | COR TEC 350i Loader PRO <sup>+</sup>              |
|---------------------------------------|---|---|---|---|---|---|
| Mechanics / electronics               |   |   |   |   |   |   |
| Base structure                        | Steel/aluminum                                    | Steel/aluminum                                    | Polymer concrete                                  | Polymer concrete                                  | Polymer concrete                                  | Polymer concrete                                  |
| Number of axes and operation type     | 5 axes, simultaneous machining                    | 5 axes, simultaneous machining                    | 5 axes, simultaneous machining                    | 5 axes, simultaneous machining                    | 5 axes, simultaneous machining                    | 5 axes, simultaneous machining                    |
| Rotation angle                        | A-axis 360°, B-axis 115°                          | A-axis 360°, B-axis 115°                          | A-axis 360°, B-axis 115°                          | A-axis 360°, B-axis 115°                          | A-axis 360°, B-axis 115°                          | A-axis 360°, B-axis 115°                          |
| Spindle                               | High-frequency spindle                            | High-frequency spindle                            | High-frequency spindle                            | High-frequency spindle                            | High-frequency spindle                            | High-frequency spindle                            |
| Maximum spindle speed / spindle power | 60.000 rpm<br>1.0 kW                              | 60.000 rpm<br>1.0 kW                              | 60.000 rpm<br>1.0 kW                              | 60.000 rpm<br>1.0 kW                              | 60.000 rpm<br>2.6 kW                              | 60.000 rpm<br>2.6 kW                              |
| Spindle cooling                       | Air cooled  | Air cooled  | Air cooled  | Air cooled  | Water cooled                                      | Water cooled                                      |
| Zero point clamping system            | Optional  | Yes   | Yes   | Yes   | Yes   | Yes   |
| Blankchanger                          | -   | Up to 12 blanks                                   | -   | Up to 12 blanks                                   | -   | Up to 12 blanks with stainless steel holder       |
| Tools                                 | Milling and grinding tools with 6 mm shaft        | Milling and grinding tools with 6 mm shaft        | Milling and grinding tools with 6 mm shaft        | Milling and grinding tools with 6 mm shaft        | Milling and grinding tools with 6 mm shaft        | Milling and grinding tools with 6 mm shaft        |
| Tool changer                          | 20-times  | 20-times  | 20-times  | 20-times  | 20-times  | 20-times  |
| Tool length control                   | ≤ 0.002 mm precision                              | ≤ 0.002 mm precision                              | ≤ 0.002 mm precision                              | ≤ 0.002 mm precision                              | ≤ 0.002 mm precision                              | ≤ 0,002 mm precision                              |
| Integrated PC                         | Windows based                                     | Windows based                                     | Windows based                                     | Windows based                                     | Windows based                                     | Windows based                                     |
| Monitor                               | Integrated 12“ touchscreen                        | Integrated 12“ touchscreen                        | Integrated 15“ touchscreen                        | Integrated 15“ touchscreen                        | Integrated 15“ touchscreen                        | Integrated 15“ touchscreen                        |
| Illumination                          | 3 LED status colors / LED illumination            | 3 LED status colors / LED illumination            | 3 LED status colors / LED illumination            | 3 LED status colors / LED illumination            | 3 LED status colors / LED illumination            | 3 LED status colors / LED illumination            |
| Software                              | Remote DENTAL 3.0                                 | Remote DENTAL 3.0                                 | Remote DENTAL 3.0                                 | Remote DENTAL 3.0                                 | Remote DENTAL 3.0                                 | Remote DENTAL 3.0                                 |
| Compressed air supply*                | 6,5 - 9,0bar @ 80l/min<br>95 - 130PSI @ 2,9cf/min | 6,5 - 9,0bar @ 80l/min<br>95 - 130PSI @ 2,9cf/min | 6,5 - 9,0bar @ 80l/min<br>95 - 130PSI @ 2,9cf/min | 6,5 - 9,0bar @ 80l/min<br>95 - 130PSI @ 2,9cf/min | 6,5 - 9,0bar @ 80l/min<br>95 - 130PSI @ 2,9cf/min | 6,5 - 9,0bar @ 80l/min<br>95 - 130PSI @ 2,9cf/min |
| Cooling liquid                        | 4,8 l<br>1,27gal (US)                             | 4,8 l<br>1,27gal (US)                             | 4,8 l<br>1,27gal (US)                             | 4,8 l<br>1,27gal (US)                             | 4,8 l<br>1,27gal (US)                             | 4,8 l<br>1,27gal (US)                             |
| Connecting requirements               |   |   |   |   |   |   |
| Weight                                | 180 kg / 396.90 lbs                               | 225 kg / 496.13 lbs                               | 205 kg / 452.03 lbs                               | 250 kg / 551.25 lbs                               | 210 kg / 463.05 lbs                               | 255 kg / 562.27 lbs                               |
| Width x depth x height                | 29.8 x 31.1 x 33.7 inch<br>758 x 790 x 857 mm     | 46.6 x 31.1 x 33.7 inch<br>1058 x 790 x 857 mm    | 29.8 x 31.1 x 33.7 inch<br>758 x 790 x 857 mm     | 46.6 x 31.1 x 33.7 inch<br>1058 x 790 x 857 mm    | 29.8 x 31.1 x 33.7 inch<br>758 x 790 x 857 mm     | 46.6 x 31.1 x 33.7 inch<br>1058 x 790 x 857 mm    |
| Supply voltage / frequency            | 100 V - 240 V /<br>50/60 Hz                       | 100 V - 240 V /<br>50/60 Hz                       | 100 V - 240 V /<br>50/60 Hz                       | 100 V - 240 V /<br>50/60 Hz                       | 110 V - 50/60 Hz<br>230 V - 50/60 Hz              | 110 V - 50/60 Hz<br>230 V - 50/60 Hz              |

\* acc. to. ISO 8573.1:2010 Class 3.4.3

Rev3.0



# Sales and support partner worldwide



Represented for you in over 100 countries.

imes-icore® GmbH has been a leading manufacturer and technology partner since 2003 in the field of dental CAD/CAM systems and solutions.

With its unique range of dental milling and grinding systems imes-icore® offers a perfect selection for all individual requirements of dental laboratories, milling centres and dental practices of all sizes.

Our “Open-System” product philosophy makes it possible to easily integrate our milling machines into your existing workflow and to integrate them with your open scanners and your CAD/CAM software. We are open for your material selection.

imes-icore® GmbH

Fon +49 (0) 66 72/898 228

Fax +49 (0) 66 72/898 222

dental@imes-icore.com