

CORiTEC® Chairside Series

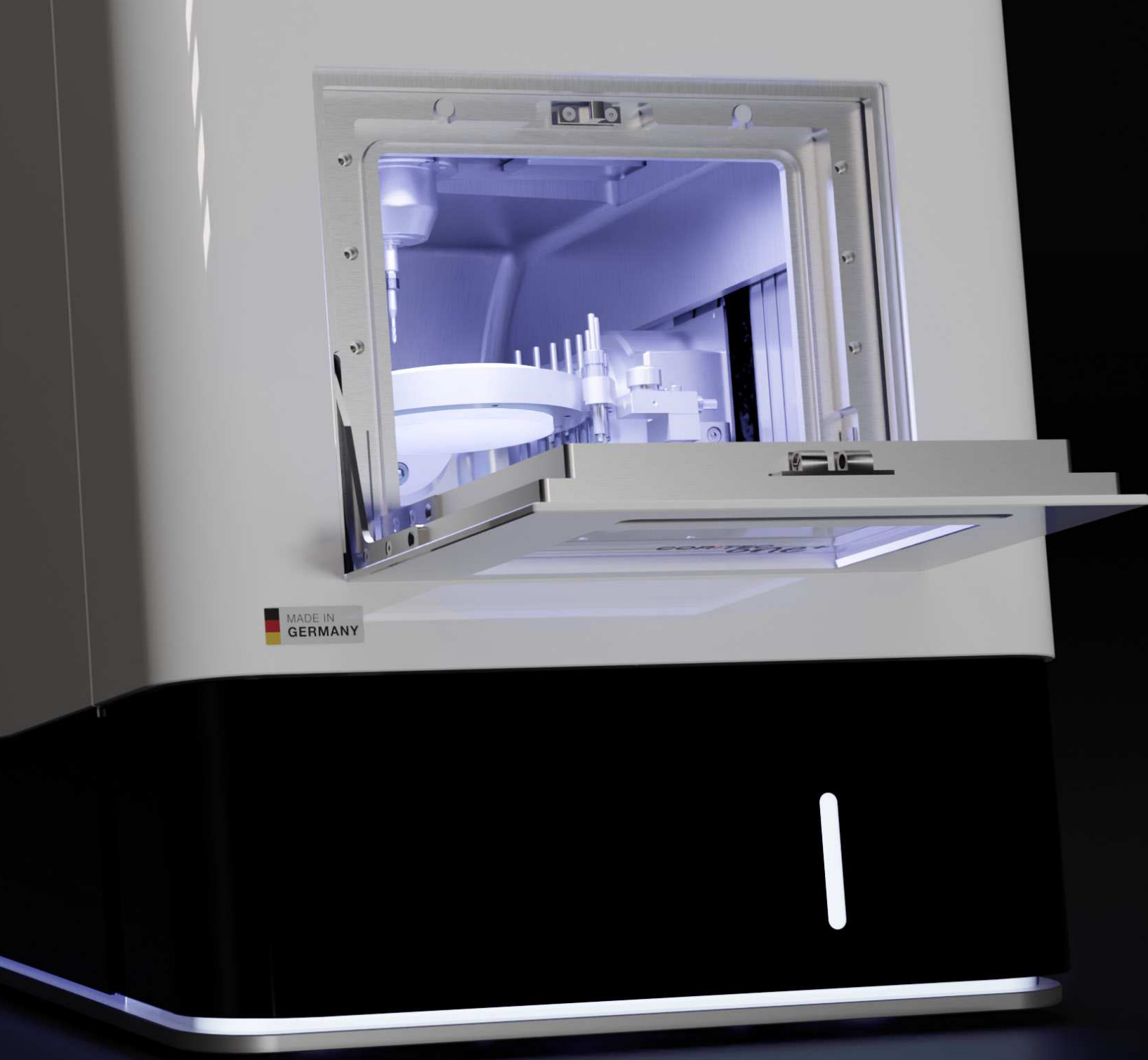


# Simplify Your Chairside Workflow

Achieve More with Less Effort  
and Greater Accuracy



**imes-icore®**  
Dental & Medical Solutions






5-axes  
Machining



Auto-  
Calibration



Ionisator



Automated  
Cleaning



Wet/dry  
processing



No external air  
pressure required

# Compact and versatile

## PERFECT FOR DENTAL CLINICS

The CORiTEC one and CORiTEC one+ stand for the latest technology in dental prosthetics manufacturing, perfectly tailored to the needs of practices, in-house labs and clinics.

The CORiTEC one impresses as a compact all-round solution with its robust aluminum cast construction, precise axis kinematics, and intuitive operation via an integrated HD touchscreen. It is ideal for processing CAD/CAM blocks and pre-milled abutments – the perfect choice for efficiency and versatility in the smallest of spaces.

The CORiTEC one+ takes it a step further with its 5-axis simultaneous technology. It supports additional holder systems, the processing of discs, and opens up new application possibilities. Its intelligent tool-changing function ensures maximum precision and flexibility for demanding chairside users. Whether compact and efficient or flexible and powerful – both models meet the highest standards and offer solutions perfectly suited to your requirements.

	CORiTEC one®	CORiTEC one+
Technische Daten		
Number of axes	4	5
Number of tool positions	6	10
Spindle power/rpm	860 watt / 100,000 rpm	
Quick-Clamping-System (manuel)	✓	
98 mm blank processing	-	✓
Integrated coolant tank	✓	
C-Clamp processing	-	Optional
98 mm blank holder	-	Included
Universal fixture for glass ceramic and pre-milled abutments	Included	Included
6-fold glass ceramic holder (for 98 mm blank holder)	-	Included





# Chairside Workflow

## THE REVOLUTION IN DENTAL PRACTICES

In modern dentistry, efficiency, precision, and patient satisfaction are crucial factors. Chairside milling machines have revolutionized the field by enabling dentists to produce high-quality restorations directly in their practice. imes-icore milling machines set new standards in terms of quality, flexibility, and cost-effectiveness.

### FASTER AND MORE EFFICIENT RESTORATIONS

Thanks to the innovative technology of imes-icore milling machines, dentists can create high-quality dental restorations in just one session.

- ✓ Reduced treatment time
- ✓ Higher patient satisfaction
- ✓ No waiting times or additional appointments

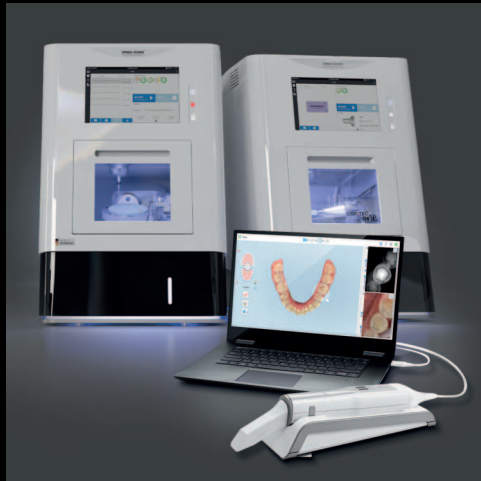
### COST SAVINGS AND FLEXIBILITY

An imes-icore chairside milling machine reduces long-term costs and offers versatile applications.

- ✓ Savings by eliminating external laboratory costs
- ✓ Processing of wide range of materials and indications
- ✓ Economic efficiency for the practice

# Top Features

ALL ADVANTAGES AT A GLANCE



## FULLY INTEGRATED WORKFLOW

By combining the iCAM software, milling machine, and CORiTEC tools, you receive a validated complete system with comprehensive service and support from a single source.

- ✓ Faster and more efficient restoration production
- ✓ Reduced costs through optimized processes
- ✓ More time for patients and practice management



## POWER MEETS PRECISION

Get started with an exceptional combination of power, speed and precision: The high-frequency spindle with 860 watts and 100,000 rpm makes the CORiTEC 150i series the ideal solution for entry-level dental production.

- ✓ Precise and uniform rotary movements enable perfect material processing
- ✓ Powerful spindle enables the processing of a wide range of materials such as zirconia, PMMA, wax and pre-milled abutments
- ✓ Processing times are reduced



## BLANK / ADAPTER CHANGE WITHOUT LOSS OF POSITION

- ✓ Thanks to the manual quick-clamping system, the various holder systems can be changed quickly with consistent precision. This enables simple operation without the need for time-consuming calibration.
- ✓ The quick-clamping system ensures that the work-piece is held securely in place, which increases precision and therefore surface quality during milling.



## PROCESSING COMPLEX INDICATIONS WITH THE C-CLAMP HOLDER

Less manual intervention enables a higher level of automation, while the fast tool change significantly reduces machining times. This allows you to carry out complex work with different materials and tools efficiently and versatily.

- ✓ Less manual intervention, more time for production
- ✓ Fast tool change for continuous production



# CORiTEC one<sup>®</sup> vs one<sup>+</sup>

## DIFFERENCES IN DETAIL



### 4-axis Machining

Ideal for the fabrication of crowns, bridges and inlays, as the material is processed precisely in four directions of movement - perfect for most standard restorations.



### Block Milling



### Premill Abutments



### 5-axis Machining

Thanks to an additional axis, even complex geometries can be milled from a 90-degree angle with the C-Clamp holder, which is particularly advantageous for implant work and demanding restorations.



### Block Milling



### Blank Milling



### Premill Abutments





## Wet & Dry Processing FOR EVERY MATERIAL REQUIREMENT

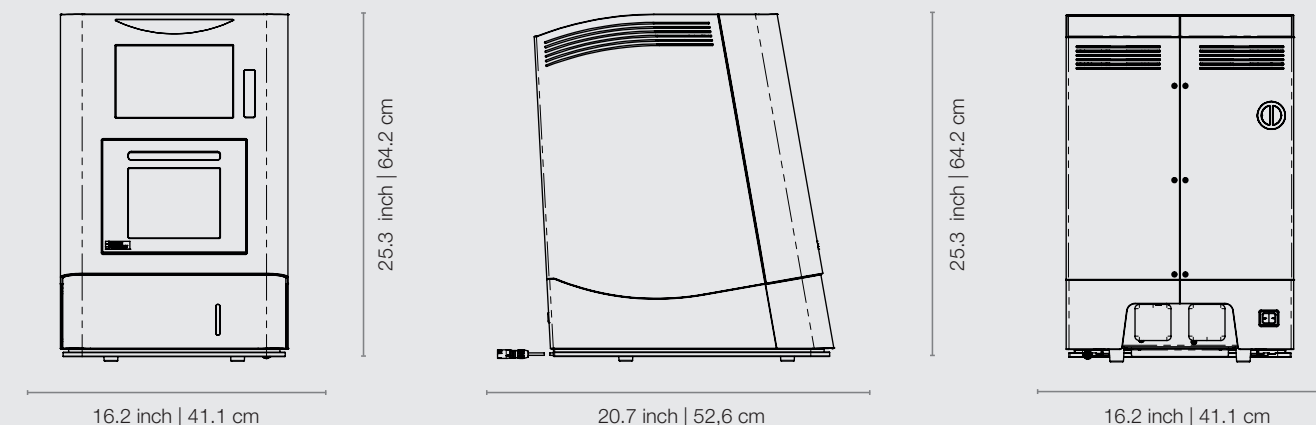
✓ Wet processing with a cooling lubrication system ensures precise results and outstanding surface quality - ideal for glass-ceramic, composite and pre-milled titanium abutments.

✓ Dry processing enables you to achieve fast, precise results with zirconia, pre-milled abutments made of CoCr and PMMA - with excellent surface quality and less dust generation.

## Perfect Dimensions

### SOPHISTICATED, EFFICIENT DESIGN FOR MAXIMUM STABILITY

The CORiTEC **one** series combines compact design with advanced technology for remarkable efficiency. Its robust construction and high-tech engineering deliver fast and precise results, even for complex tasks. Ideal for practices, in-house labs, and clinics that require both stability and flexibility in their workflows. Enjoy optimal performance and perfect results in a space-saving design.





# Variety in Material & Application

FROM PMMA TO PREMILLED ABUTMENTS – PRECISE  
PRECISE SOLUTIONS FOR EVERYDAY  
PRACTICE WORK



## MATERIALS

PMMA	WAX
Zr Pre-sintered	Zr Fully dense sintered
PEEK	COMPOSITE
Glass ceramics	SINT
Premilled CoCr-Abutment	Premilled Ti-Abutment

## INDICATIONS

### CORITEC one®

Crown, Bridge	Inlay, Onlay, Veneer	Hybrid Abutment	Abutment

### CORITEC one<sup>+</sup>

Crown, Bridge	Inlay, Onlay, Veneer	Bridge larger 3 units	Splint
Full Denture	Model	Surgical guide	Model casting
Bar	Telescope Technology	Abutment	Hybrid Abutment

# Maximal Flexibility

## HOLDER UND ADAPTER

**Do you need a simple and efficient CAD/CAM system for your dental practice?**

The CORiTEC **one**® and **one**<sup>+</sup> deliver reliable performance and are perfectly tailored to the demands of daily practice.

The manual quick-clamping system enables fast and easy workpiece changes. With flexible holders and adapters, you can design your production processes efficiently and precisely—ideal for practices that require both stability and flexibility in a compact space.

### 1 UNIVERSAL HOLDER

For the CORiTEC **one**® and **one**<sup>+</sup>: The universal adapter is a versatile single-holder for turning, milling, and grinding processes. It offers high precision and enables tool-friendly machining. With a wide selection of adapters, it is perfectly suited for glass ceramic blocks and various abutment systems.

### 2 BLANK HOLDER

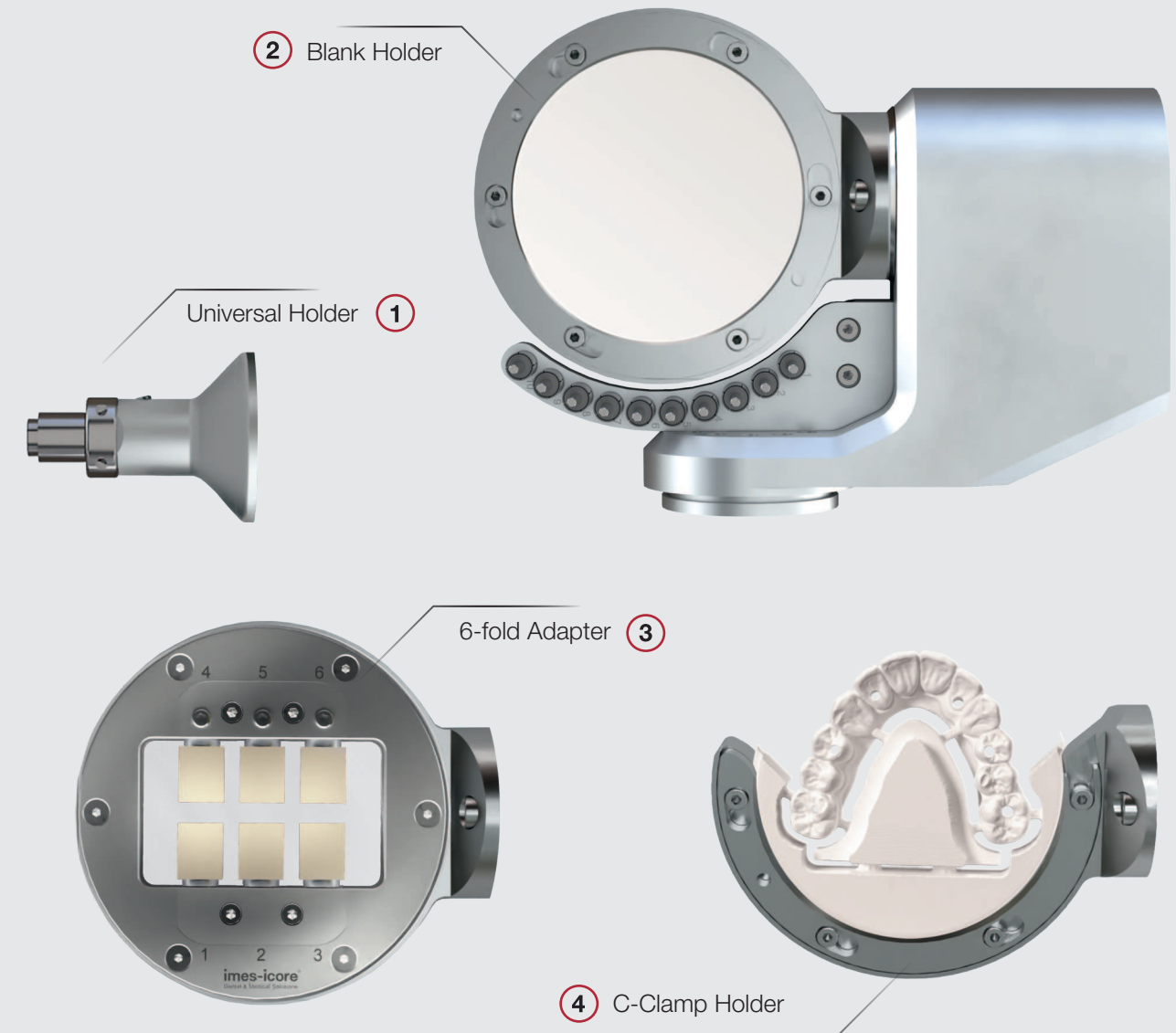
For the CORiTEC **one**<sup>+</sup>: The closed aluminum blank holder offers high stability and is ideal for the precise processing of all common materials in blank form. Its robust design ensures reliable results and exact processing.

### 3 6-FOLD ADAPTER

For the CORiTEC **one**<sup>+</sup>: With the 6-fold adapter, up to six blocks or abutments can be processed simultaneously. Flexible, exchangeable bars allow easy adaptation to different adapter systems and ensure quick material changes for maximum efficiency.

### 4 C-CLAMP HOLDER

For the CORiTEC **one**<sup>+</sup>: The half-open blank holder enables 5-axis machining with an axis angle of up to 90° and expands the technical possibilities of your milling machine. This flexibility is particularly suitable for complex geometries and precise reworking. Its design ensures exact positioning during milling.







# Versatile Possibilities

## INDICATIONS AND APPLICATIONS



### CROWNS

Perfect aesthetics and stability - precisely fitting crowns made of zirconium oxide, glass-ceramic or hybrid ceramic ensure long-lasting restorations with a natural look. The digital manufacturing process guarantees precise adaptation to the individual tooth structure.

### INLAYS UND ONLAYS

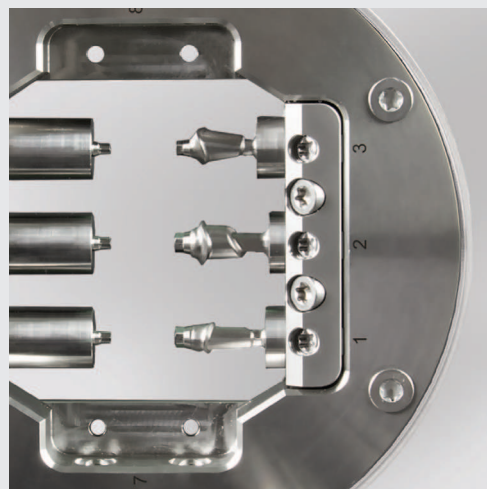
A long-lasting alternative to fillings: Precisely manufactured inlays and onlays offer high stability and perfect color matching. They preserve the natural tooth structure and optimize chewing forces.

### VENEERS

Thin, aesthetic and minimally invasive - veneers correct tooth shape and color without unnecessarily sacrificing healthy tooth structure. The milling process enables perfect adaptation to the natural smile.

### BRIDGES

Stable and precisely manufactured bridges close gaps between teeth safely and aesthetically. Depending on the choice of material, they offer optimum function and long durability.



## CORiTEC® preMill ABUTMENTS

The CORiTEC preMills are supplied with abutment screw and compatible libraries, modules and holders. They enable dental technicians and dentists to produce validated and efficient customized one-piece titanium abutments – with full control over quality and time, in compliance with FDA requirements.

- ✓ Short production times
- ✓ Validated overall system
- ✓ High accuracy of fit thanks to prefabricated implant interface



## SURGICAL GUIDE

The CORiTEC®one+ enables dental surgical guides to be produced quickly and precisely directly in the practice. These serve as indispensable aids for the safe insertion of implants and impress with their accuracy of fit, stability and ease of use.

- ✓ Reduction of treatment times
- ✓ Minimization of surgical risks



## THERAPEUTIC SPLINTS

CORiTEC machines represent precision and innovation in the manufacture of therapeutic splints. They combine state-of-the-art technology with maximum flexibility and guarantee perfect results for laboratories and practices.

- ✓ Bite splints, bleaching splints
- ✓ Mandibular advancement splint and aligners

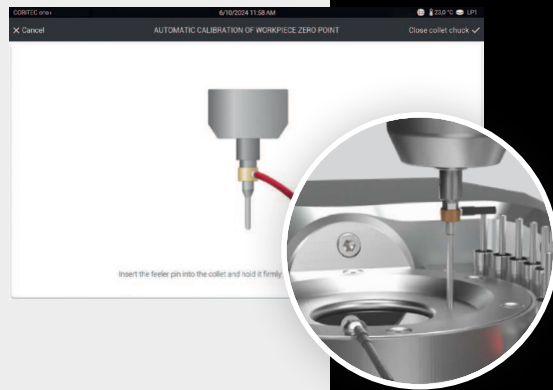


## MODEL CASTING

The CORiTEC 150i series enables the precise fabrication of model casting prostheses made of PEEK material, for example, which is ideal for the fabrication of allergy-free and low-weight model casting.

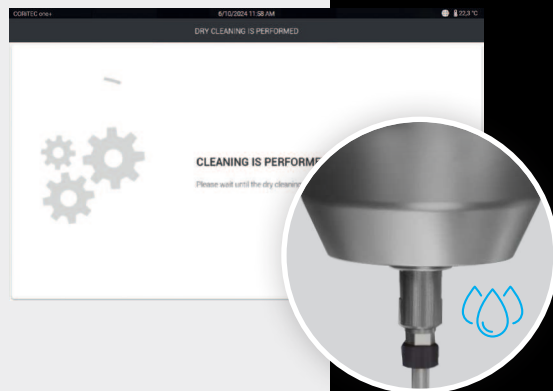
- ✓ Allergy-free and low-weight model casting
- ✓ Cost-efficient, functional and comfortable





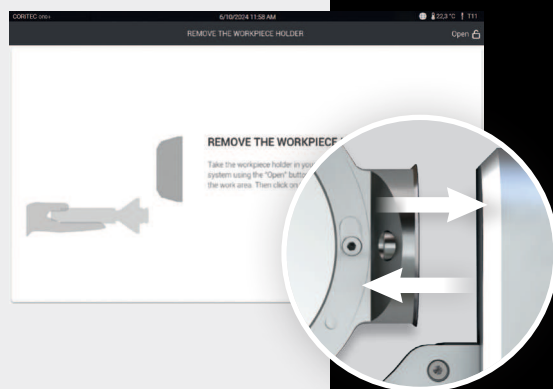
## AUTOCALIBRATION

Autocalibration enables quick and convenient handling to ensure consistently precise results. With intuitive step-by-step instructions and direct integration into the machine control system, the calibration process is simple and efficient. This saves you time and resources, while you can count on reliable and consistent precision.



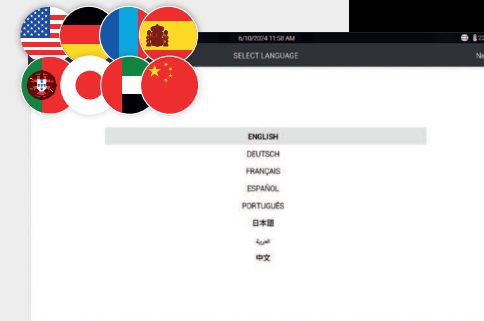
## ASSISTANT-GUIDED CLEANING

The assistant-guided cleaning process makes **wet and dry cleaning** your machine simple and efficient. The integrated step-by-step instructions ensure that the cleaning process is completed quickly and reliably – without time-consuming preparation or complex instructions. This function not only helps to extend the service life of the machine but also ensures consistently high performance.



## EASY HOLDER CHANGE

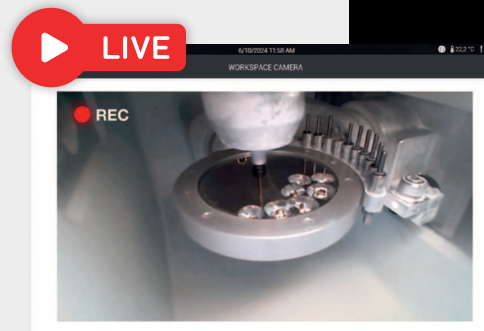
The quick-clamping system makes changing the holder precise and uncomplicated. The control software guides users through the process with intuitive step-by-step instructions. As a result, the holder is positioned quickly and accurately, ensuring smooth operation and consistently precise results. At the same time, the workflow is optimized and the time required is significantly reduced.



## INDIVIDUAL LANGUAGE SELECTION

The flexible language options of the program interface support the operation in the preferred language. This versatility ensures intuitive use and maximum efficiency in day-to-day work worldwide.

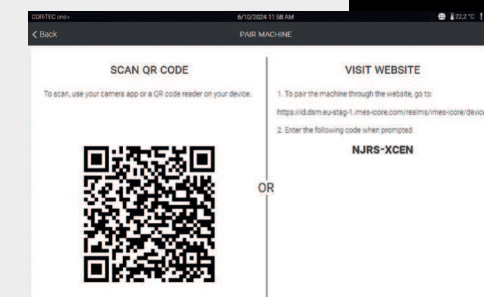
- ✓ German
- ✓ English
- ✓ Chinese
- ✓ Spanish



## MILLING PROCESS MONITORING

The integrated HD camera enables direct monitoring of the milling process in real time. If questions or challenges arise, the support team can respond quickly to ensure efficient support.

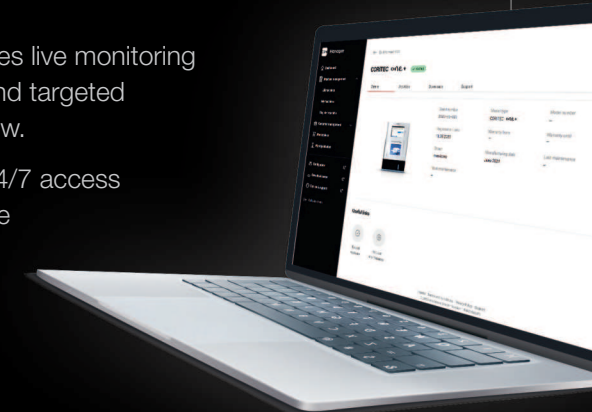
**CORITEC DSM**  
Dental Smart Market



## DSM CONNECTION

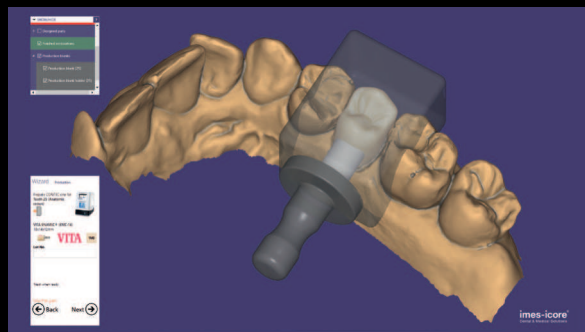
The DSM connection enables live monitoring of your machine systems and targeted optimization of your workflow.

- ✓ Automatic updates & 24/7 access
- ✓ View machine status live
- ✓ Maintenance reminder
- ✓ Warranty protection
- ✓ Machine park overview



# Easy-to-use

## INTUITIVELY OPERABLE USER SOFTWARE

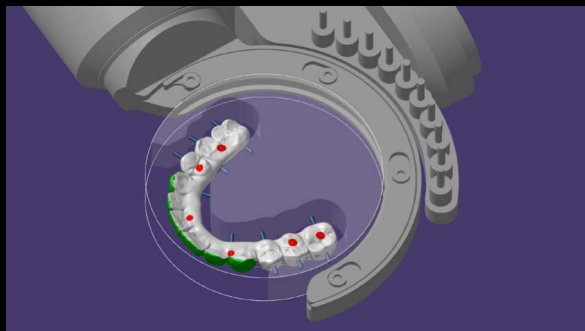
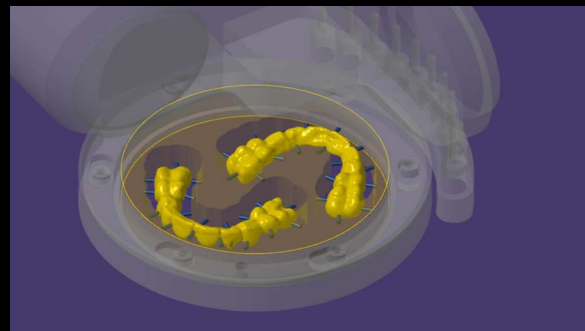


### ChairsideCAD Software

With the help of exocad ChairsideCAD, crowns, inlays, onlays, veneers and small bridges can be designed and manufactured directly at the treatment center in a very innovative and fast workflow. Using the integrated In-CAD Nesting module, the designed jobs can be placed directly in the block for calculating and milling by the machine.

### imes-icore Chairside Nesting<sup>+</sup>

Experience multifunctional possibilities with 5-axis machining. The revolutionary Chairside Nesting+ allows the processing of indications without limitations due to the automated data transfer and the intelligent blank management. This makes workflows a secondary matter and puts the work on the patient in the focus.





# Coordinated and Validated Workflow

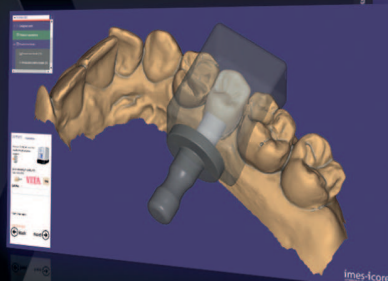
## SEAMLESSLY INTERLOCKING PROCESSES

By combining the iCAM software, milling machine, and CORiTEC tools, you receive a validated complete system with comprehensive service and support from a single source.

### IOS

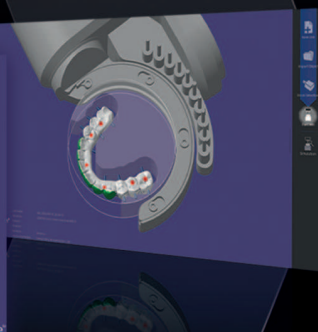
iTero  
GC  
Dexis  
Medit  
Shining 3D  
3DISC  
3Shape  
Dentsply Sirona  
... and other  
scanners

### CAD Processing



exocad

### CAM Processing



iCAM one

iCAM one+



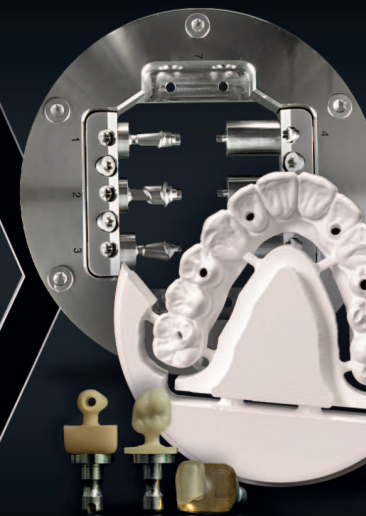
### Materials

Glass ceramics  
Lithium Disilicate  
Lithium Silicate  
Hybrid ceramics  
Komposit  
Zirkonia  
Fully sintered zirconia  
preMill Abutments  
(Titanium + Cobalt-Chrome)  
PMMA / PEEK

### Tools



### Solutions



# Intraoral scanners

FLEXIBILITY FOR YOUR DIGITAL WORKFLOW

To achieve a fully integrated workflow, the CORTEC one machine system can be combined with all open intraoral scanners.





# Perfect Synergy

## Between Machine, Tools, iCAM and Materials

### FULLY SINTERED ZIRCONIA BLOCKS

Fully sintered zirconia blocks are ideal for the milling of:

- ✓ Veneers: Highly aesthetic anterior restorations
- ✓ Crowns: Durable restorations with natural aesthetics
- ✓ Inlays/Onlays: Precise and minimally invasive solutions
- ✓ Partial crowns: Conservative and aesthetic restorations

### GRINDING TOOLS



- ✓ Specially for fully sintered zirconia
- ✓ Integrated in the validated workflow
- ✓ Optimized service life

## Cutters and Grinders

### CORiTEC® TOOLS

CORiTEC milling tools guarantee precision and efficiency. Perfectly matched to our machines, they offer maximum performance, durability and optimum results – combined with the right materials for your applications.

- ✓ 3 mm
- ✓ High speed milling tools
- ✓ Torus milling tools
- ✓ Shaft tools
- ✓ T-milling tools
- ✓ Standard milling tools

ALL TOOLS  
AT A GLANCE



To the milling tool brochure

## CAD/CAM Materials

### CORiTEC® MATERIALS

Our specially developed materials are perfectly matched to CORiTEC machines and guarantee maximum precision and quality. Made in Germany and validated for a wide range of applications, they meet the highest standards for the best results.

- ✓ priti®multidisc
- ✓ CORiTEC® splint comfort Polymere
- ✓ CORiTEC® splint basic Polymere
- ✓ CORiTEC® temp PMMA disc
- ✓ CORiTEC® gum PMMA disc
- ✓ GC® Initial LiSi Block
- ✓ GC® cerasmart270

- ✓ VITABLOCS® Mark II / Triluxe forte / Reallife
- ✓ VITA ENAMIC® multiColor, ST, TriLuxe forte
- ✓ VITA SUPRINITY® PC
- ✓ VITA CAD-Temp® monoColor / multiColor
- ✓ VITA YZ HT/ VITA YZ T, VITA YZ ST / VITA YZ XT
- ✓ VITA VIONIC® DENT DISC multiColor, BASE DISC HI

ALL MATERIALS  
AT A GLANCE



To CORiTEC® Materials  
[www.pritidenta.com](http://www.pritidenta.com)

# CORiTEC® preMill Abutment

## CUSTOMIZED SOLUTION WITH ADDED VALUE AND GROWTH FOR YOUR PRACTICE

The COR TEC preMills are supplied with abutment screw, compatible libraries, modules and holders. This enables dental technicians and dentists in their dental practice to manufacture customized one-piece abutments made of titanium with full control over quality and time – fully in accordance with FDA/MDR regulations.

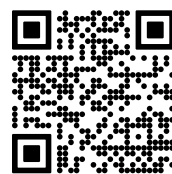
### ADVANTAGES

- Follows the natural morphology of the soft tissue
- Supports the gingiva and creates a root-shaped emergence
- Allows angulation for alignment of the prosthetic crown
- Adapts to the anatomical shape of the crown, providing perfect support and a larger bonding surface
- Allows a natural transition from the implant to the prosthetic crown

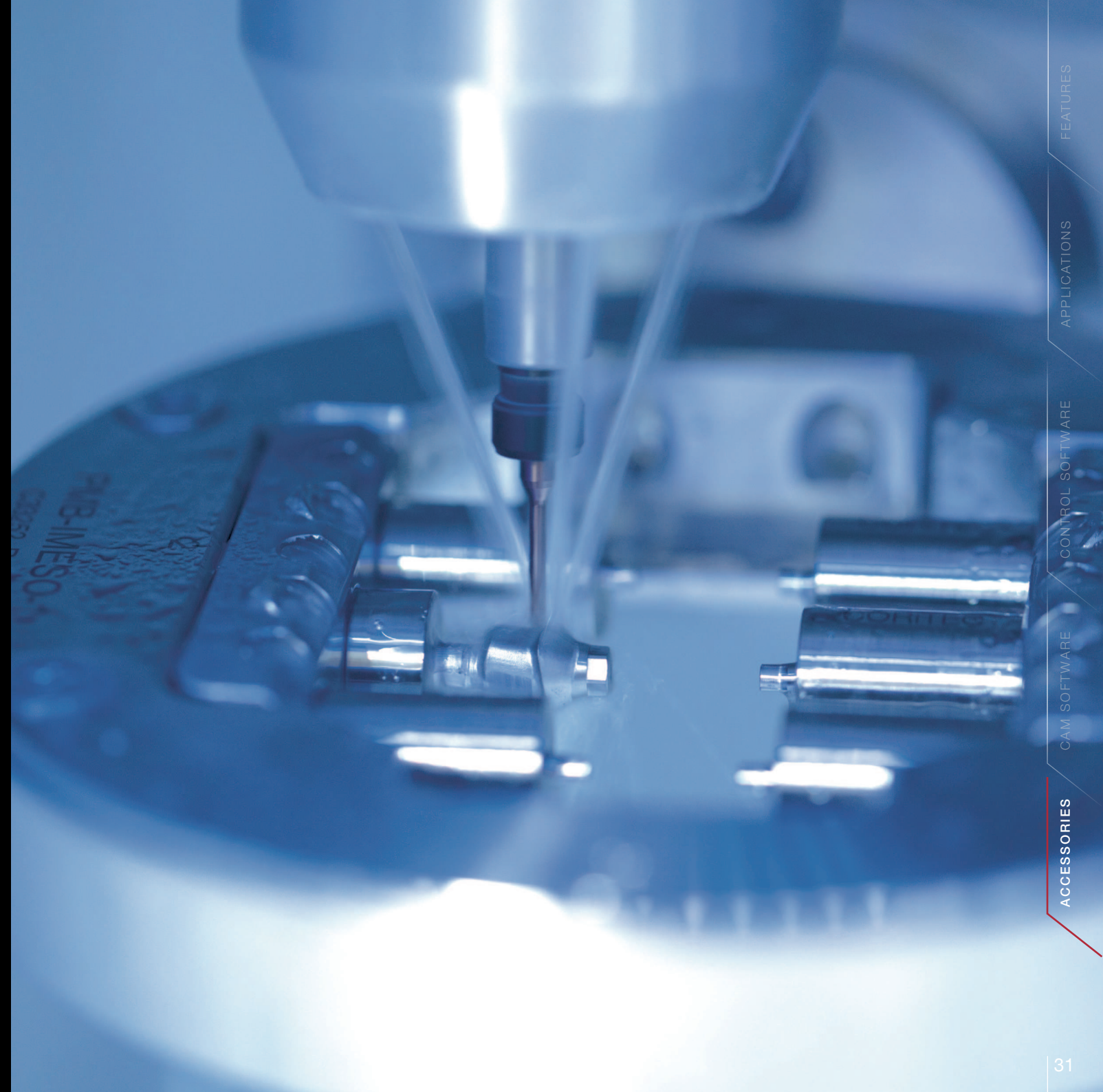


### FEATURES

- **Self-locking screws** prevent loosening from the module
- **Modular design of the holder** (easy assembly, cleaning and easy replacement)
- **One-tool concept** simplifies mounting of the holder, modules and CORiTEC preMills by using a Torx 20 tool
- **High degree of design freedom** due to minimal gingival height and improved library geometry
- **Perfect implant emergence profile**, as no widening of the emergence profile above the implant diameter is required
- **Smooth transition area** significantly reduces manual reworking
- **Perfect CAM interaction** due to automatic nesting by implementation of metadata



MORE INFORMATION





# Suction Systems

## DUST PROTECTION AND AIR CLEANING

### iVAC silent

The iVAC silent impresses with its compact design and high-quality technology at an affordable price. Equipped with Teflon filter cartridge with automatic cleaning and dust drawer with 8 liter volume. With a volume flow of 160m³/hour, it is perfectly suited for the CORiTEC **o10** and **o10+** milling machines. The iVAC silent also fits perfectly into the imes-icore machine tables.

### iVAC silent

Technical data	
Volume flow	160 m³/h
Power	480 W
Filter system	Teflon filter cartridge, automatic cleaning
Filter flow	8 l/min / 2.11 gpm

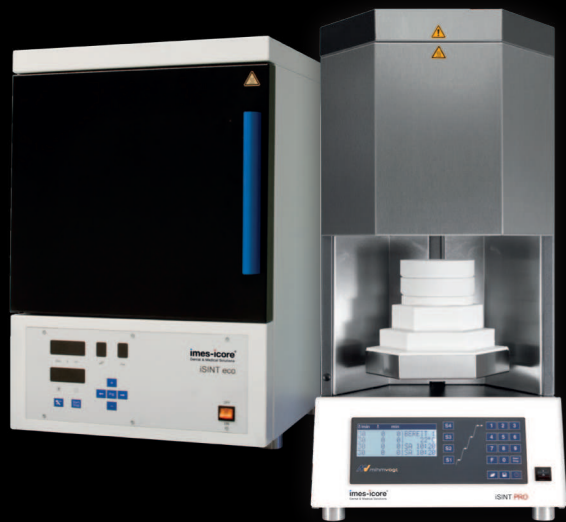


# Sintering Furnaces

## SINTERING PROCESS FOR ZIRCONIA

### iSINT eco

The iSINT eco combines high-quality technology with a space-saving design and a fair price. With a sintering dish of Ø 100 mm, it offers capacity for up to 25 units. The door hinge can be flexibly mounted on the right or left – ideal for a versatile laboratory environment.



### iSINT PRO

The iSINT PRO enables the sintering of up to 80 individual crowns. With four MoSi2 heating elements, it offers both long-term sintering and SPEED sintering at up to 90°C/minute. A 4-line LCD display simplifies program control. Additional functions such as timer and service programs as well as a pre-drying program make the iSINT PRO a flexible solution for modern laboratories.

	iSINT eco	iSINT PRO
Technical data		
Heating elements	4	4
Program memories	9	30
Combustion chamber capacity	1 x 100 (approx. 25 units)	2 x 120 (approx. 80 units)
Max. Heating rate	30 °C/min / 86 °F/min	90 °C/min / 194 °F/min
Power	1720 W	3200 W
Lift function	-	✓
Speedsintering	-	✓

# Machine Table

## SOPHISTICATED FUNCTIONALITY

Our machine tables combine stability, functionality and sophisticated design - for convenient and efficient use. They offer storage space, stable castors, drawers and space for extraction systems.

- ✓ Highest quality - Made in Germany
- ✓ Stability for dynamic processes
- ✓ High level of comfort and ergonomics



# Everything at a glance

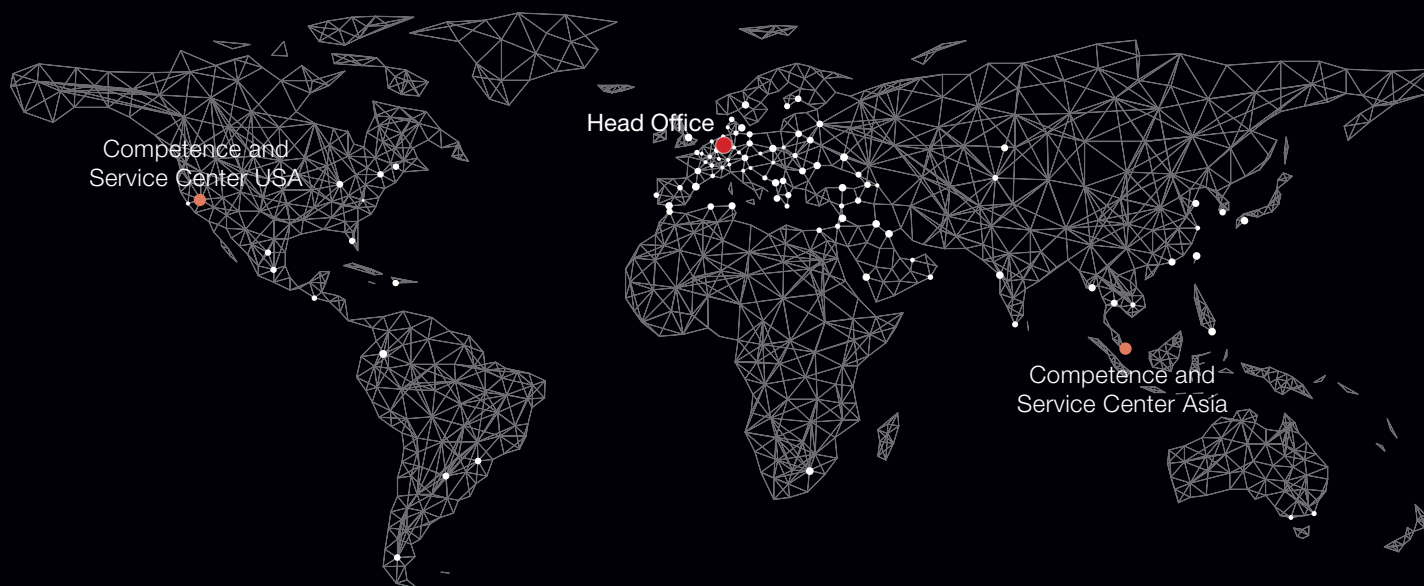
## CORiTEC® one SERIES IN NUMBERS

CORiTEC one®		CORiTEC one+
Mechanics / electronics		
Number of axes / operation type	4 axes, simultaneous processing	5 axes, simultaneous processing
Angle of attack	± 180°	B-axis 130°
Spindle	High-frequency spindle	
Maximum speed / spindle power	100,000 rpm/860 watt	
Tools	Milling and grinding tools with 3 mm tool shaft	
Tool changer	6-fold	
Tool length control	≤ 0,002 mm precision	
Software / Integrated PC	SmartControl™ integrated CNC software	
Display	Integrated 10'1" touchscreen	
Illumination	Dynamic LED illumination	
Air pressure	No external air pressure needed	
Cooling liquid	3 liter/11.36 gpm integrated	
Connecting requirements		
Weight	75 kg / 169.8 lbs	77 kg / 169.8 lbs
Width x depth x height	16.6 x 21.9 x 25.4 inch / 422 x 556 x 644 mm	16.6 x 21.9 x 25.4 inch / 422 x 556 x 644 mm
Line voltage / frequency / maximum power	100 V - 230 V / 50/60 Hz / 500 watt	100 V - 230 V / 50/60 Hz / 500 watt



# Global Support

SALES AND SUPPORT PARTNERS  
IN OVER 100 COUNTRIES



Since 2002, imes-icore® has been a leader in CAD/CAM systems for the dental industry. With customized solutions for laboratories, milling centers and dental practices of all sizes, we offer high-performance milling and grinding systems. Our open system philosophy guarantees easy integration into existing workflows.



To the imes-icore  
website



Configure machine  
directly

**imes-icore®**  
Dental & Medical Solutions

**imes-icore GmbH**  
Im Leibolzgraben 16  
36132 Eiterfeld

☎ +49 (0) 66 72/898 228  
✉ [dental@imes-icore.com](mailto:dental@imes-icore.com)  
[www.imes-icore.com](http://www.imes-icore.com)